

Marta Pelegrín + Fernando Pérez
MEDIOMUNDO
 arquitectos

Calle San Salvador 22
 41013 Sevilla - ESPAÑA
 (+34) 954230372
 mediomundo@mediomundo.es
 www.mediomundo.es



MEDIOMUNDO arquitectos, construyen un espacio de producción de arquitectura e investigación. Sus obras y proyectos han sido premiados en concursos nacionales e internacionales y seleccionados en premios como International Daylight Spaces (Facultad Ciencias de la Salud, Granada), 20+10+X World Architecture Community (Centro Social Macarena, Sevilla), XI Bienal Española Arquitectura y Urbanismo 2010 (Biblioteca en Cañada Rosal, Sevilla), IX Bienal de Arquitectura y Urbanismo 2014 (AtributosUrbanos), AJ Emerging Women Architectural Awards 2015 por su trayectoria, y catalogados en Arquia Próxima por elCine-Teatro Vejer (Cádiz) y Viviendas Sociales en Conil (Cádiz).

Su obra ha sido recogida en publicaciones internacionales, junto a artículos críticos sobre prácticas espaciales y materiales en el cambio de siglo. Han comisariado el proyecto Arquitectura Dispuesta: Preposiciones cotidianas en el CAAC y Mostra Espanha 2015. Dirigen la investigación www.atributosurbanos.es, Trazabilidad Proyectiva, 0+ Vacío Positivo, sobre procesos de proyecto, construcción y uso para la reconstrucción común del hábitat.

TEXTO - TEJIDO - CONFECCIÓN

Nuestros trabajos son producciones espaciales y materiales que devienen de una actitud cuya definición tal vez se encuentre en el artículo "TEXTO - TEJIDO - CONFECCIÓN" de los artistas y productores de arte BNV Producciones.

TEXTO: marco conceptual e ideas que argumentan y sostienen nuestra práctica arquitectónica. Se han publicado en artículos críticos, discusiones sobre investigación y trabajos curatoriales.

TEJIDO: una red social e institucional capaz de aunar, ligar y poner en común aquellas experiencias y situaciones culturales que se están produciendo, o sea, trabajar con el contexto, entendiendo por contexto no sólo el lugar de presentación de las propuestas sino también los lugares que generan esas propuestas.

CONFECCIÓN: una serie de producciones, que expresen, espacialicen y materialicen el trabajo procesual y conceptual al que refieren texto y tejido respectivamente. Trabajo de arquitectura que integran una actitud que se refleja en nuestra producción arquitectónica.

Faculty of Health Sciences

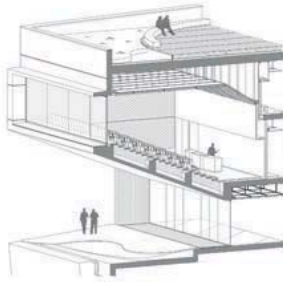
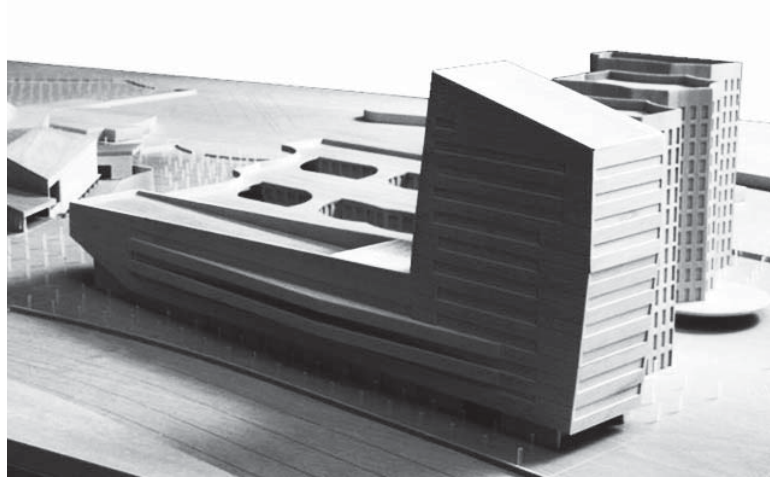
Awarded in the International Competition of the Health Sciences Campus

Technical data

ARCHITECT: MEDIOMUNDO Arquitectos
 María Pelegrín + Fernando Pérez
 CATEGORY: Educational
 PROGRAMME: Specialized Classroom, Laboratories, Administration, Events Hall, Pool for physiotherapy.
 SITE: Granada, Spain
 DATES, PHASES: COMPETITION: 2006
 PROJECT: 2006, BUILT/COMPLETION: 2014
 PRIZES: 3 Prizes
 AREA: 16.000m²
 COST: 21.000.000,00 €
 DEVELOPER: Vice-Rectorate of heritage, infrastructure and campus at the University of Granada (Universidad de Granada: Vicerrectorado de Patrimonio, Infraestructuras Y Equipamientos) Address: Cuesta del Hospicio S/N 18071 Granada, SP
 CO-MANAGEMENT: Territorio Y Ciudad (M.g. Fustegueras)
 COLLABORATORS: F. Orizia, M. López De Asiain, P. Pérez, A. López, O. Navarro, A. Cuadrado, A. Babio, D. Asencio, Jr. Guerra, B. Soust.
 TECHNICAL SUPPORT: Elite Ingeniería Slp (Installation), Tedeco Ingenieros SI (Structure), J. A. Lubiano, J.c. Castro. (Quantity Surveyor + Management)

Awards

- Award Daylight Spaces Donau Uni Krems (Austria, 2014).
- 2º Premio XXIV "Obras Cemex Internacional 2015" México., Categoría Best Sustainability in Building.
- 2º Premio XXIV "Obras Cemex Internacional 2015", México. Categoría Best Institutional Building
- 1º Premio Diseño en Andalucía 2016. Categoría Mejor Espacio: Facultad Ciencias
- Finalista en Mejor Diseño de Producto 2016. Categoría diseño mobiliario: Butaca "Alejo" para el Salón de Actos Facultad Ciencias de la Salud. Granada.



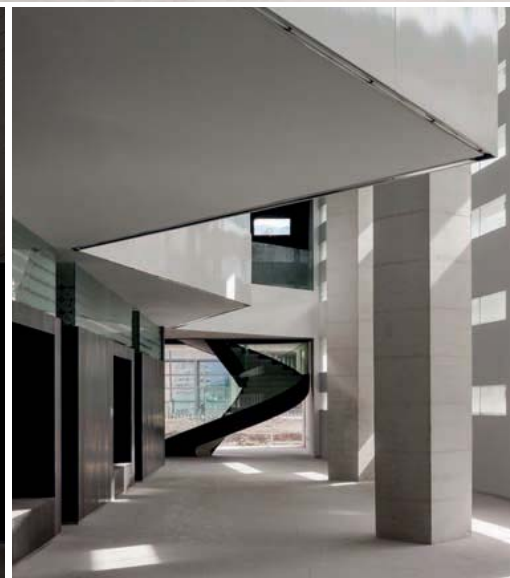
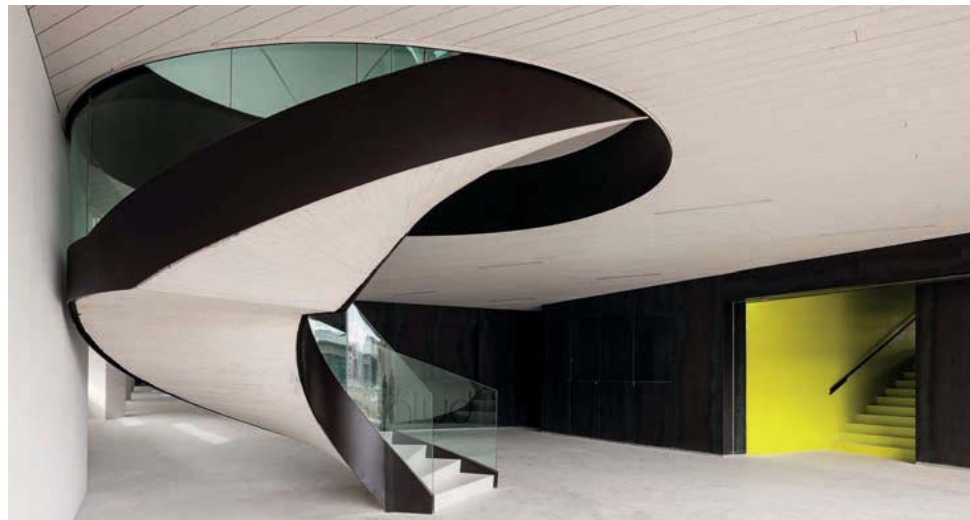
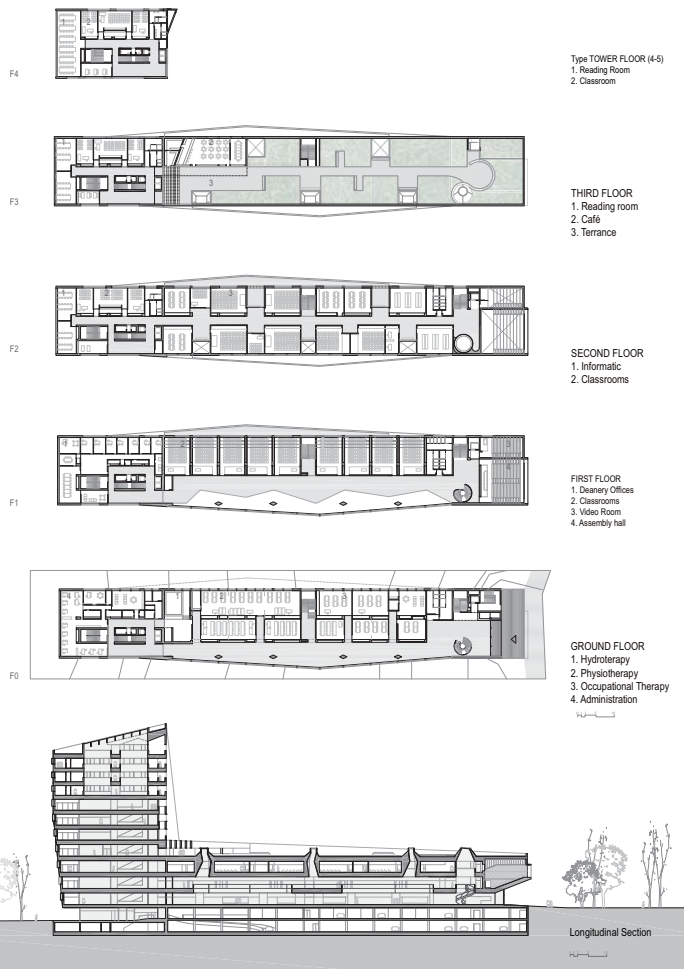
Project Description

Our entry for the new Faculty of Health Sciences in Granada international competition resulted in the commission of a 16,000m² building; a length of 130m, width of 19m, a total of 10 floors, with a 3 floor podium spanning west to east. The building sits along side the technology campus and University Hospital.

Our project converted each spatial necessity into positive parameters, granting the close relationships between common and private-institutional spaces. The east entrance is located under the cantilevered auditorium, leading to the main classrooms. Their array along the length of the podium, appropriates continuous series of double height spaces, natural skylights, and patios, the west entrance is located on the bottom of the tower, giving access to offices, specialized teaching and research resources, administration and Deanery.

It is a building of simple and immediate materiality, where the white-textured concrete is visible on the elevations, the floors, and the interiors. The interior linings of stairs and circulation spaces leading towards the leisure spaces are finished with black steel plate and epoxy paint-work.





Social Center Macarena Tres Huertas

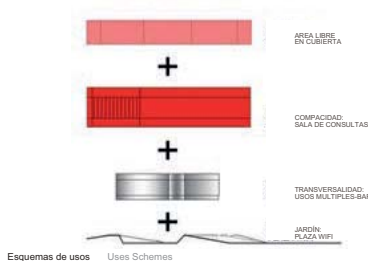
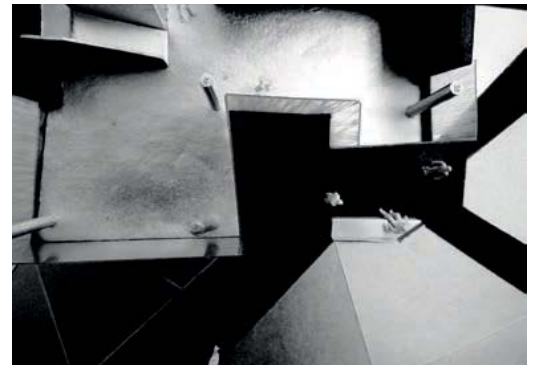
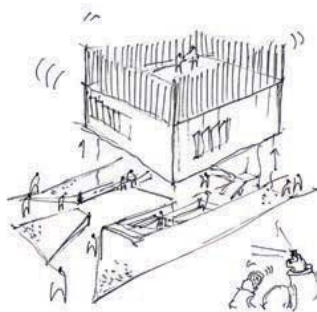
Awarded in the Public National Competition

Technical data

ARCHITECT: MEDIOMUNDO Arquitectos
Marta Pelegrín + Fernando Pérez
CATEGORY: Social Facility
PROGRAMME: Social Cybercenter
SITE: Sevilla, Spain
DATES, PHASES: COMPETITION: 2001
PROJECT: 2003, BUILT/COMPLETION: 2009
AWARD: 1st Prize
AREA: 450 m²
COST: 448.164,43 €
DEVELOPER: City Administration of Housing, Plot and Social Investment, Sevilla. (Empresa Municipal de Vivienda, Suelo y Equipamiento de Sevilla, S.A.)
CO-DESIGNER ARCHITECT: Mario Ortega Gómez (MOG- Arquitectos)
COLLABORATORS: Fabio Orizía Pérez, Raúl Elías Bramón, Silvia Casitas Montero, Ana López Ortego, Harold Guyaux (Office Team)
TECHNICAL SUPPORT: Elías Pérez Lema (Installations), Tedeco Ingenieros SI (Structure), José Antonio Lubiano (Quantity Surveyor + Management)

Awards

- SELECTED PROJECT
20+10+X World Architecture
Community Awards

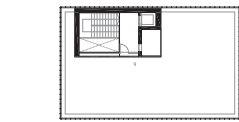
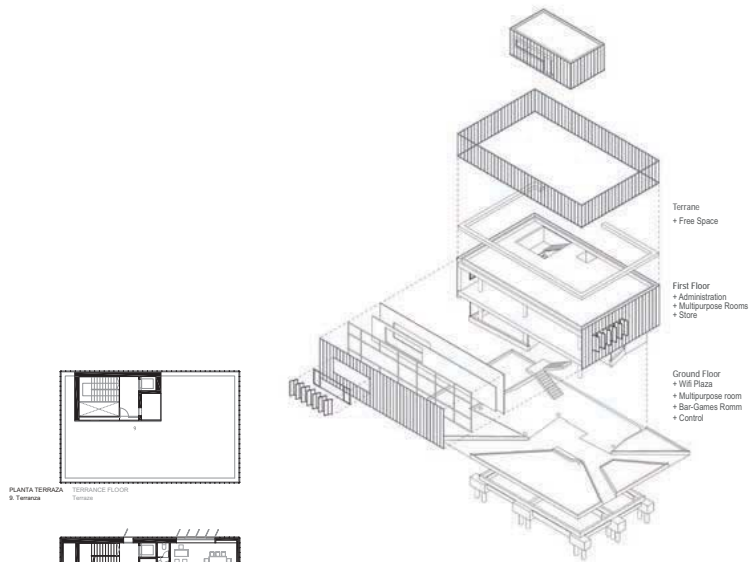


“A connecting point, a meeting point”

The Social Cyber Centre Macarena Tres Huertas competition was part of the city government's (EMV/ISESA) framework for progressive establishment of its 'tele-administration' initiatives, of which was to become beneficial and available to all its citizens. This demanded a new spatial medium to provide the local inhabitants with the necessary equipment for computing and information communication technologies.

Therefore the new 'Macarena Social - CyberCentre' sits in its place. The access to the technologies were enabled through optimising the visual and physical connections of surrounding paths and opens spaces. The ground floor is freed from programme in order to create a wi-fi plaza below the building. The small garden and porch lead to the cafeteria, and multipurpose rooms, all offered for the meeting purposes of the neighborhood. Above these spaces, arises a volume lined with red lacquered sheets, where computer labs, workshops and offices are located.

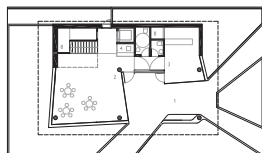




PLANTA TERRAZA
9. Terrace



PLANTA PRIMERA
1. Administración
2. Sala multiusos 1
3. Sala multiusos 2
4. Sala multiusos 3
5. Almacén

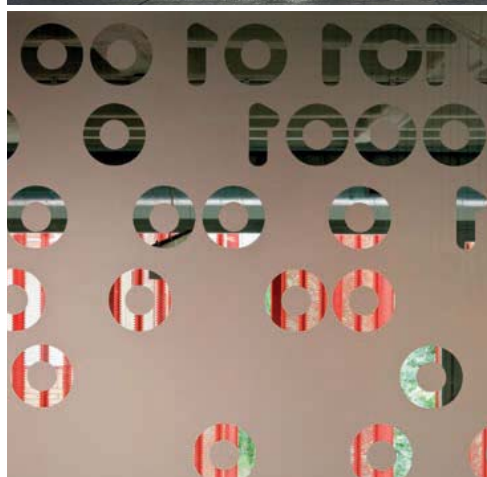
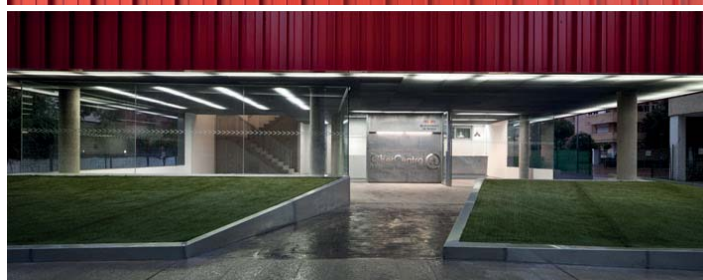


PLANTA SEGUNDA
1. Plaza WiB
2. Sala multiusos 1
3. Sala multiusos 2
4. Sala multiusos 3
5. Almacén



Sección Longitudinal
Longitudinal Section

MEDIDOMUNDO arquitectos
María Pleguez + Fernando Pérez
C/ San Salvador 22, 41013 Sevilla, España TE: +3495 4203072 www.medidomundo.es



San Francisco Movie Theatre

Awarded in the Public National Competition

Technical data

ARCHITECT: MEDIOMUNDO Arquitectos
 María Pelegrín y Fernando Pérez
 CATEGORY: Culture, Rehabilitation
 PROGRAMME: Theatre and cinema
 SITE: Vejer de la Frontera, Cadiz (Spain)
 DATES, PHASES: COMPETITION: 2001
 PROJECT: 2003, BUILT/COMPLETION: 2010
 AWARD: 1st Prize
 AREA: 1492 m²
 COST: 1,814,279,00 €
 DEVELOPER: Junta de Andalucía (Regional Government of Andalucía), Cadiz Provincial Council and Vejer Town Council/ Excmo. Ayuntamiento de Vejer de la Frontera+ Junta de Andalucía Consejería de Cultura +Diputación Provincial de Cádiz)
 CO-DESIGNER ARCHITECTS: SITIO arquitectura, D. Brieva
 TECHNICAL SUPPORT: TEDECO Ingenieros (Structure), DIMArq S.L. (Installation), Industrias Maquiescénic S.L.
 QUANTITY SURVEYOR: Gerardo Sandar Nuñez

Awards

- 2010 CATALOGUED WORK
 Arquia Próxima 2009



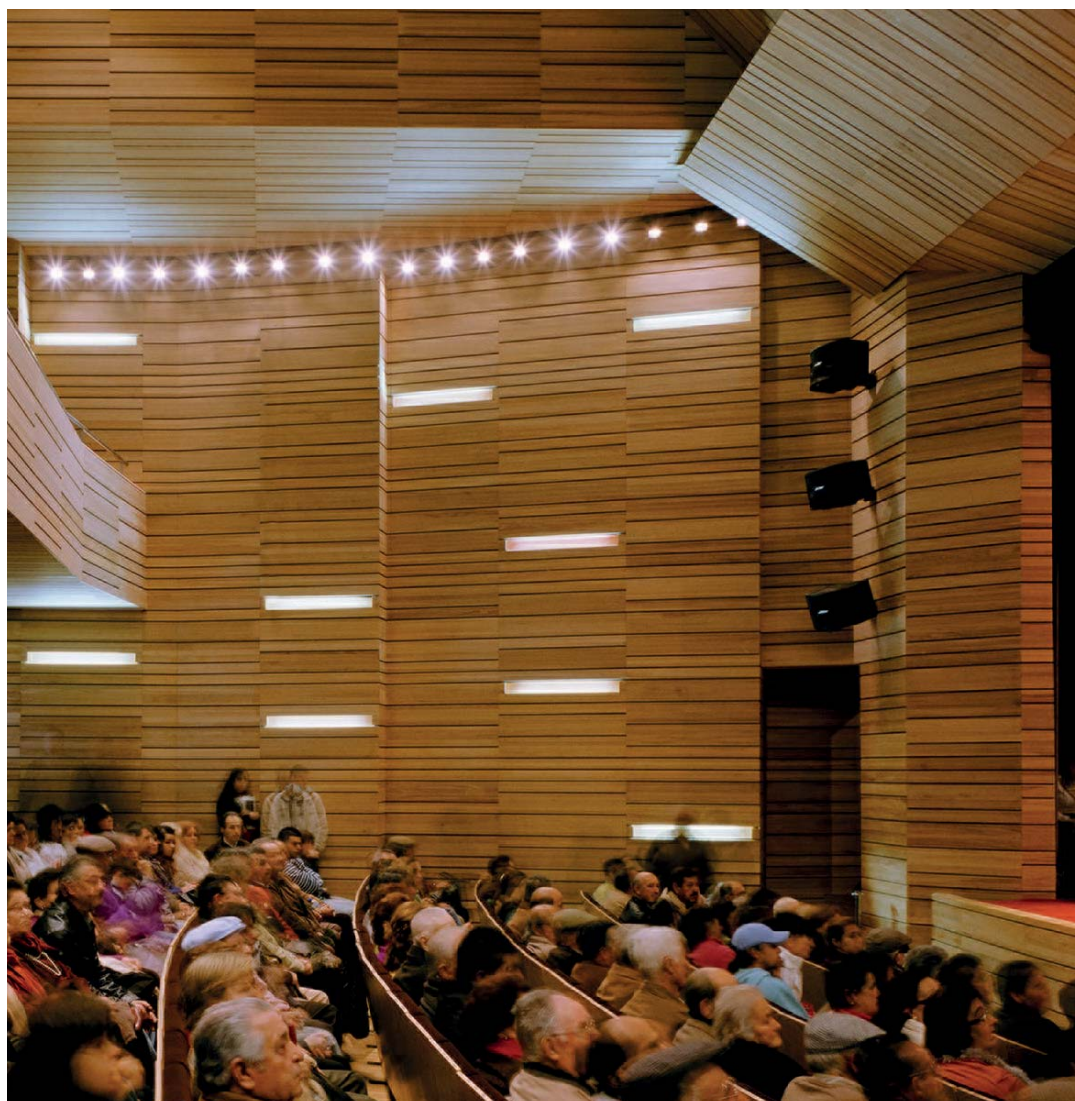
Inheritance is the scene

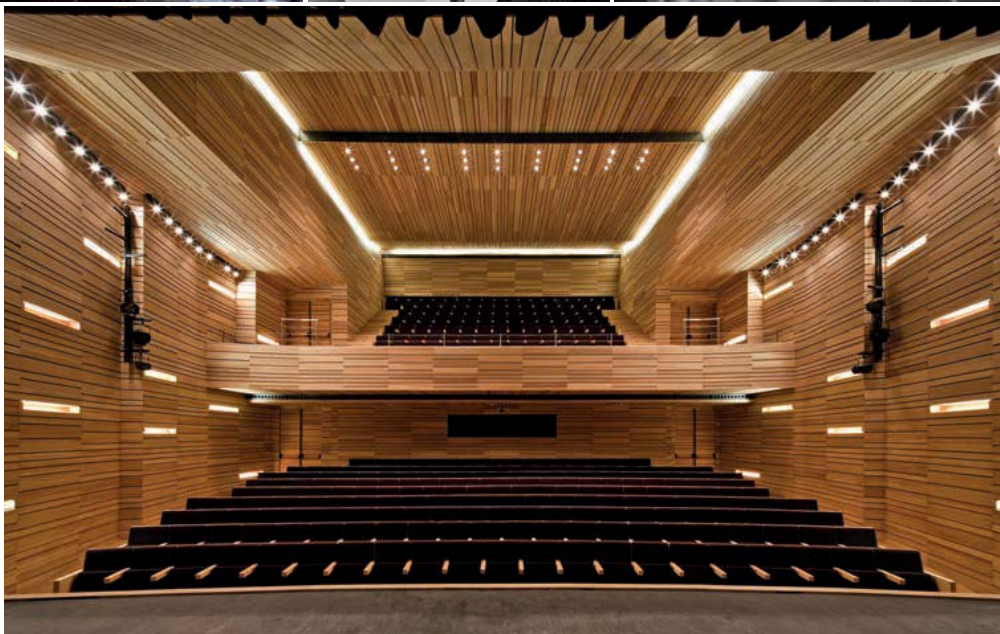
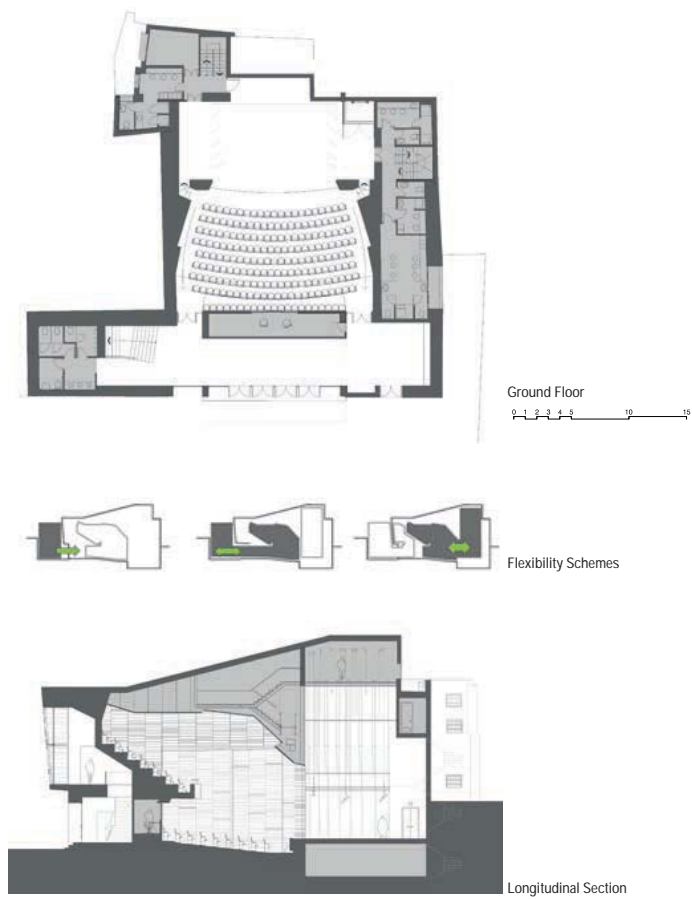
In 2002 MEDIOMUNDO arquitectos won the commission to design a movie theatre in Vejer de la Frontera in the competition launched by the Junta de Andalucía. The brief involves the rehabilitation of an existing but practically obsolete cinema in an old warehouse to convert it into a theatre and cinema. We renovated the existing facilities and proposed a process to recover the historical and sociocultural surroundings of the building itself.

While the original cinema existed with its back to the urban setting, the new movie theatre opens onto the street in dialogue with its surroundings. We propose a building whose materials and traditional construction methods work in tandem with sophisticated theatrical and scenic technology to form a new skyline that functions in direct relation with the architecture of Vejer.

The project creates a new point of reference in the existing skyline, as well as providing a place from which to look out at the town and surrounding landscape. The movie theatre opens out onto the street via a double-height lobby along the façade.

The two floors are connected with a naturally lit central staircase via skylights. On the ground floor the projection room divides the two main entrances to the theatre. On the upper level are located the administrative offices. The theatre facilities (store room, workshop and rehearsal space) are located at the back of the theatre. In this part of the building the technical requirements define the space. This is where the various volumes are articulated with the morphology of the place



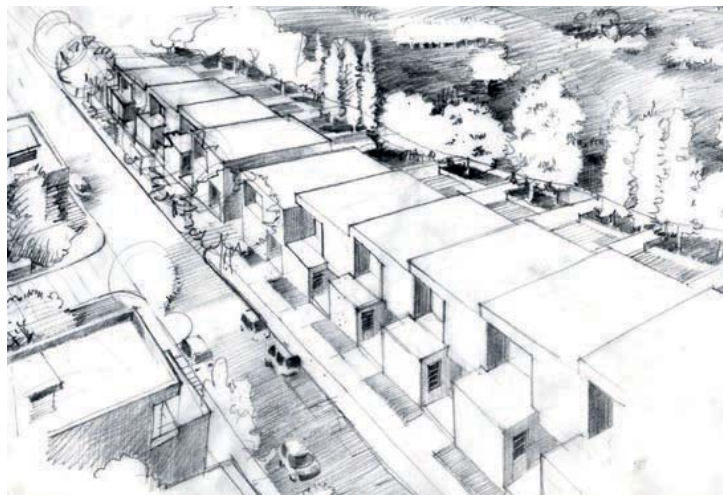


32 Social Housing

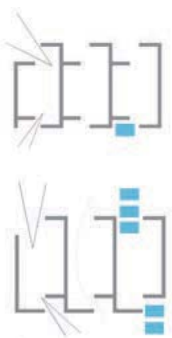
Awarded in the Public National Competition

Technical data

ARCHITECT: MEDIOMUNDO Arquitectos
María Pelegrín y Fernando Pérez
Category: Residential
PROGRAMME: 32 Council Houses
SITE: Conil de la Frontera, Cadiz, Sp
DATES, PHASES: COMPETITION: 2004
PROJECT: 2008, BUILT/COMPLETION: 2009
AWARD: 1st prize
AREA: 3526 m²
COST: 2.829.662,12 €
DEVELOPER: Roche City corporation. ROSAM (Roche Sociedad Anonima Municipal)
COLLABORATORS: F. Orizia, A. Cortés, E. Pérez, N. Pintos
TECHNICAL SUPPORT: P. Álvarez Ramos, (Structure & Installation) G. Sandar Núñez (Quantity Surveyor)



16



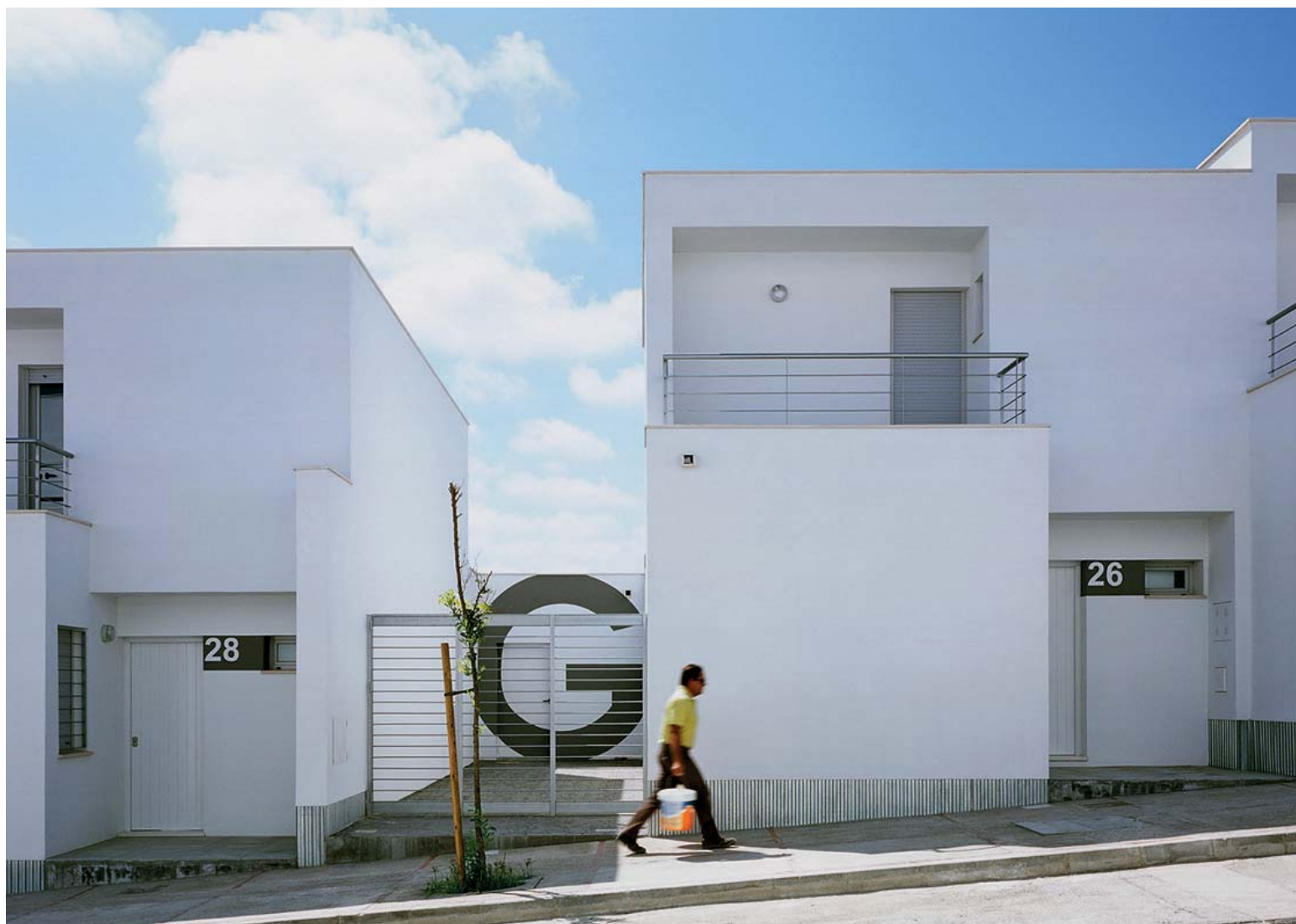
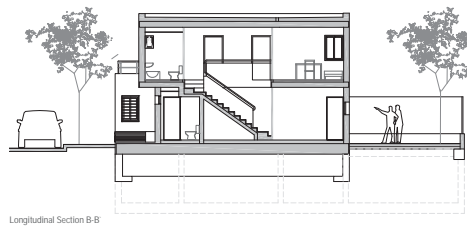
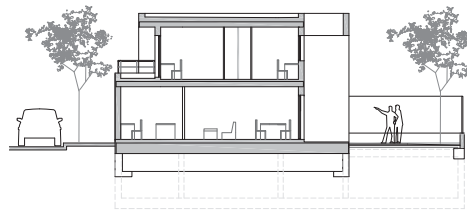
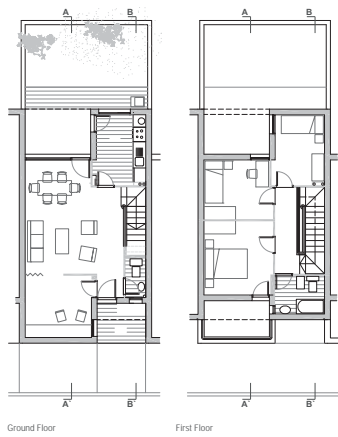
Comunal Living Process

We are interested in exploring the relationship between the interior and exterior of housing as a system of spaces of transition and filter of intimacy. The weather conditions in Conil de la Frontera are defined by winds and intense sunlight.

We incorporated a self-protective system of openings within sensitive areas of the houses without having to use external accessories such as latticework, eaves or parasols. In this sense, the project integrates passive sustainable systems according to traditional construction methods. A vibrant, modulated and irregular sequence of volumes create areas of light and shade, adapting to the natural slope of the plot.

The social-collective spaces of the houses are located on the ground floor whose entrance is set back from the street with a partially covered area. We responded to the brief by designing a versatile space, which allow it to be used as an independent studio, office or playroom. The other communal areas within each of the houses are well connected via corridors. The ample staircase is incorporated into both the kitchen and living room, and the covered balcony on the first floor connects the bedrooms with outside world.





Public Library Cañada Rosal

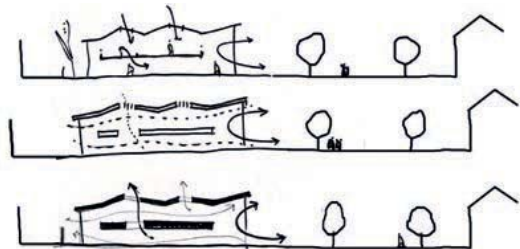
Awarded in the Public National Competition

Technical data

ARCHITECT: Mediomundo Arquitectos
Marta Pelegrín & Fernando Pérez
PROGRAMME: Municipal Library
SITE: Plaza Sta. Ana, Cañada Rosal (Sevilla), Spain
DATES, PHASES: COMPETITION: 2005
PROJECT: 2006, BUILT/COMPLETION: 2009
AWARD: 1st Prize
AREA: 200 m²
COST: 315.300,00 €
DEVELOPER: (EPSA part of the Regional Government of Andalusia) Empresa Pública de Suelo de Andalucía
COLLABORATORS: F. Orizia, A. Pérez, P. Alvarez, Dimarq SI
TECHNICAL SUPPORT: DiMarq (Samuel Domínguez, Salvador Muñoz) (Installations), Pedro Alvarez Ramos (Structure), Abel Pérez Cascán (Quantity Surveyor + Management)

Awards

- SELECTED WORK. Price XI
BEAU (Bienal Española de Arquitectura y Urbanismo)



Project Description

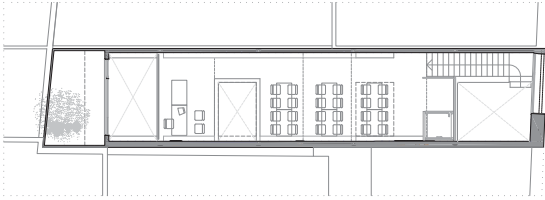
In 2005 Cañada Rosal Town Council (Seville) launched an architectural competition in collaboration with the Empresa Pública de Suelo de Andalucía (EPSA - part of the regional government of Andalusia) to design a public library. MEDIOMUNDO arquitectos was awarded first prize for the proposal and the construction of the public library was completed in 2009.

Our project involves the creation of a meeting point for information and culture. Under the continuous roof, whose folds create a dialogue with neighbouring constructions, consecutive interior spaces are defined by light entering via skylights.

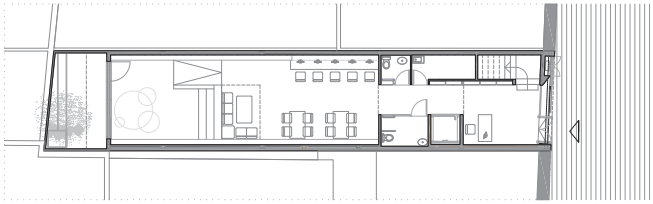
The homogeneity of the materials used in the construction sequence a play of light and shadows, creating engaging changes of intimacy as one moves from the entrance to the heart of the building, the library located near the patio and children's area. In this manner, the library becomes a gradual extension of public space.

The project proposes a simple layout for the optimal use of space. The entrance elaborates with a double-height lobby, a place of exchange with the public space outside. In the shelves and bulletin board, hide a staircase that leads to the reading room on the top floor. The elevator and ancillary services are located on the ground floor immediately after the lobby. This transitional area makes way to the reference section, audio books, computers and press. Moreover the children's area is accentuated by an overhead laylight that leads into the rear courtyard.



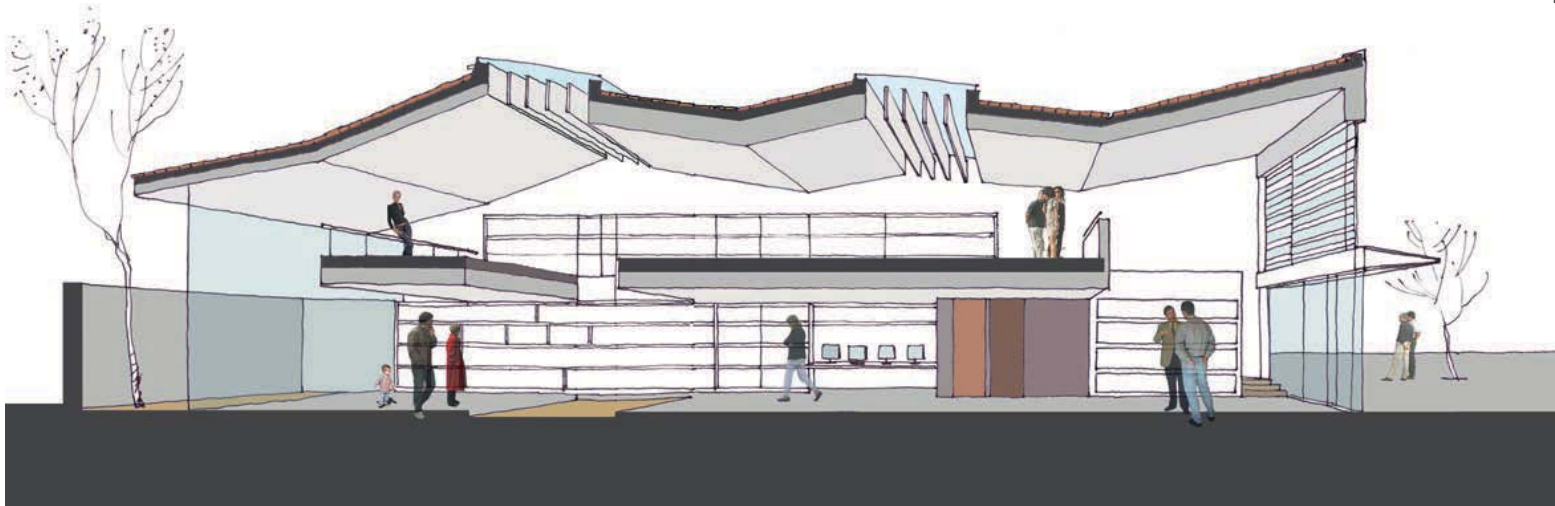


FIRST FLOOR
Study Room
Administration



GROUND FLOOR
Control & Security
Reading Space
Child Space
Patio

0 1 2 5 10



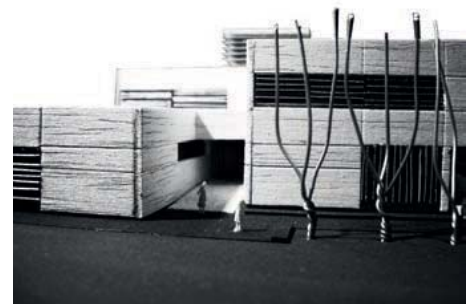
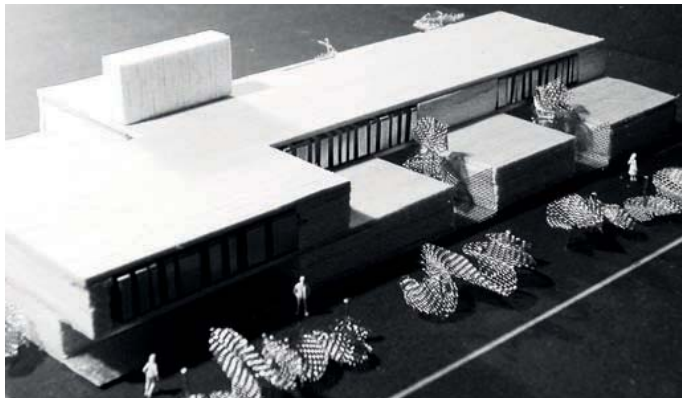
Membrilla Health Center

Membrilla, Ciudad Real

Awarded in the Public National Competition

Technical data

ARCHITECT: Mediomundo Arquitectos
 Marta Pelegrín & Fernando Pérez
 PROGRAMME: Health Center
 SITE: Ciudad Real, Spain
 DATES, PHASES: COMPETITION: 2004
 PROJECT: 2005, BUILT/COMPLETION:
 2009
 AWARD: 1st Prize
 AREA: 2450 m²
 COST: 1.960.000,00 €
 DEVELOPER: SESCAM (Government of
 Castilla La Mancha)
 COLLABORATORS: J. Ortega, A. Cortés, E.
 Pérez, F. Navarro
 TECHNICAL SUPPORT: JM Sialka (Grupo
 SIALKA)



Project Description

In 2004 SESCAM launched an architectural competition to design a health centre in Membrilla. The project is located in a small village near Manzanares. MEDIOMUNDO arquitectos was awarded with the first prize in 2005.

The location of this project on the urban periphery and the absence of other buildings in the immediate environment led us to design a building that fits in with the surrounding agro-industrial landscape.

The building comprises different spaces in order to create an intimate relationship with its future users. For this reason the building has been designed on two floors.

The first floor is a continuous space while the ground floor is a succession of connecting courtyards that illuminate the interior and break up the building giving it a friendlier façade covered in prefabricated concrete panels reminiscent of industrial constructions in the area that have been adapted to the dimensions of the building.

The different spaces have been arranged around the various courtyards in such a way that the covered areas are enhanced by the open spaces. The building is arranged around a central axis that contacts the various spaces on both floors.

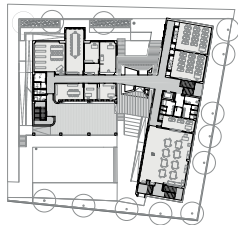
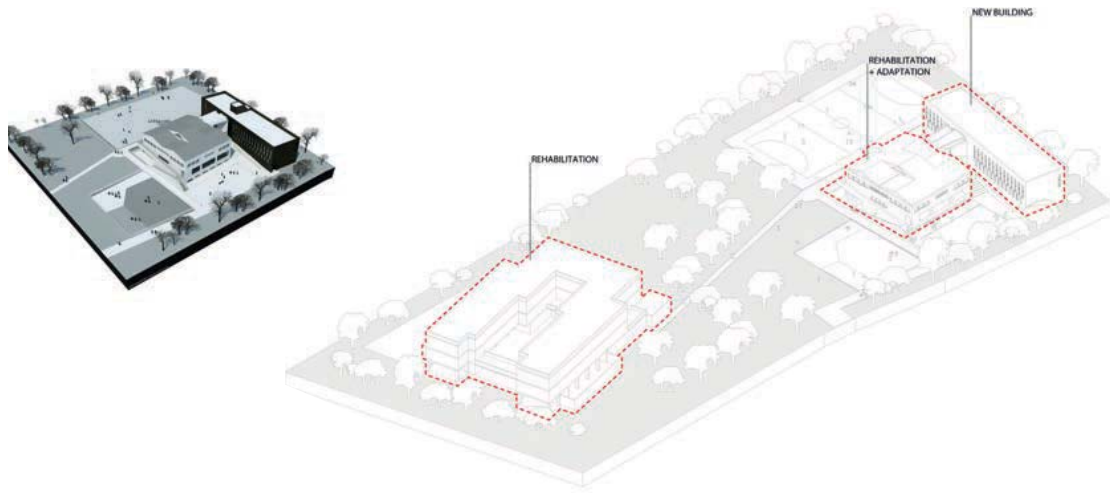


Arrayanes Primary School Seville, Spain

Awarded in the Public National Competition

Technical data

ARCHITECT: Mediomundo Arquitectos
 María Pelegrín & Fernando Pérez
 PROGRAMME: Culture and educational
 SITE: Seville, Spain
 DATES, PHASES: COMPETITION: 2006
 PROJECT: 2006, BUILT/COMPLETION: ongoing
 AWARD: 1st Prize
 AREA: Rehabilitation 2665,5 m², Adaptation
 788.55m², New buildings 1413.86 m², Total=
 4867,91m²
 COST: 994.99,84 €
 DEVELOPER: Andalusian Public Entity Infrastructure
 and Educational Services | Ente Público Andaluz de
 Infraestructuras y Servicios Educativos _ISE Andalucía
 COLLABORATORS: Fabio Orizia, Daniel Asencio,
 Alberto Babio, Antonio Alanis, Alisa Santacruz, Jorge
 Tinoco, Daniel Del Valle
 TECHNICAL SUPPORT: Elite Ingeniería Slpu
 (Installations), Tedeco Ingenieros SI (Structure), J. A.
 Lubiano (Quantity Surveyor + Management), Beatriz
 Moreno Molina (Quantity Surveyor, Safety & Health
 Coordination), Elias Pérez Lema (Energy Efficiency)



Project Description

In 2010 MEDIOMUNDO arquitectos won the commission to Rehabilitation, adaptation and new building for a set of kindergartens, primary school, secondary school and language school in Granada in a competition launched by Andalusian Public Entity Infrastructure and Educational Services of the Ministry of Education, Culture and Sport, Spain.

The project are two interventions on the two existing buildings:-
 The first intervention is a Rehabilitation and adaptation from the current Kindergarten. The new classroom block has six primary classrooms and common services (administration, teachers lounge, multipurpose rooms, library, gym, restrooms, locker rooms, etc. ..). The Existing Building is rehabilitated to achieved the new requirements of use, accessibility and energy efficiency.

The new classroom block is situated in order to protect the playground from inclement weather. The buildings are linked between them by an external gallery.

The second intervention is the rehabilitation and adaptation of the primary education to the Official School of Languages building of to achieved new educational requirements, accessibility and energy efficiency. New classrooms, administrative spaces, new gym and a new dining area are included, linked to the garden.

Both parts are connected by a large garden that includes spaces for recreation and playgrounds. Landscape was redefined as a playground, sports courts and green areas for meetings, as well as improving the environmental characteristics.

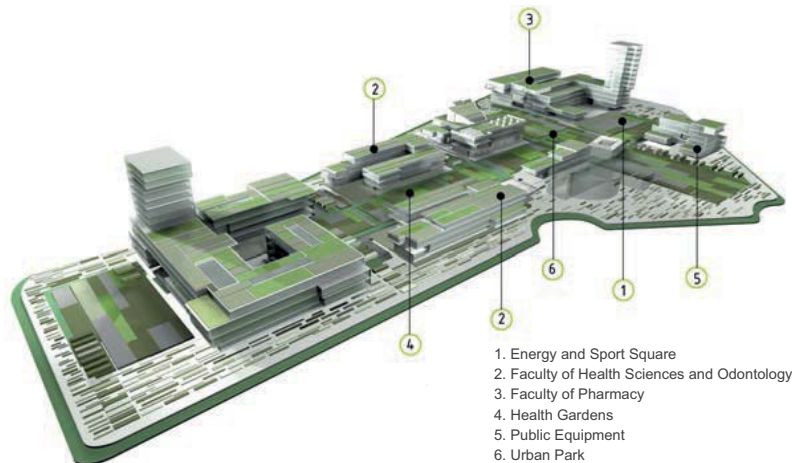


Masterplan and urban design Health Sciences Campus

Awarded in the Public National Competition

Technical data

ARCHITECT: Mediomundo Arquitectos
Marta Pelegrin & Fernando Perez
PROGRAMME: Culture and educational
SITE: Granada, Spain
DATES, PHASES: COMPETITION: 2007
AWARD: 3rd Prize
AREA: 140,000 m²
DEVELOPER: Vice-Rectorate of heritage, infrastructure and campus at the University of Granada (Universidad de Granada: Vicerectorado de Patrimonio, Infraestructuras Y Equipamientos) Address: Cuesta del Hospicio S/N 18071, Granada, SP
COLLABORATORS: F. Orizá, M. López de Asiain, P. Pérez, O. Navarro, S. Morales, M. Chacoff, A. Cuarado
ADVISORS: Elite Ing. TEDECING.



1. Energy and Sport Square
2. Faculty of Health Sciences and Odontology
3. Faculty of Pharmacy
4. Health Gardens
5. Public Equipment
6. Urban Park



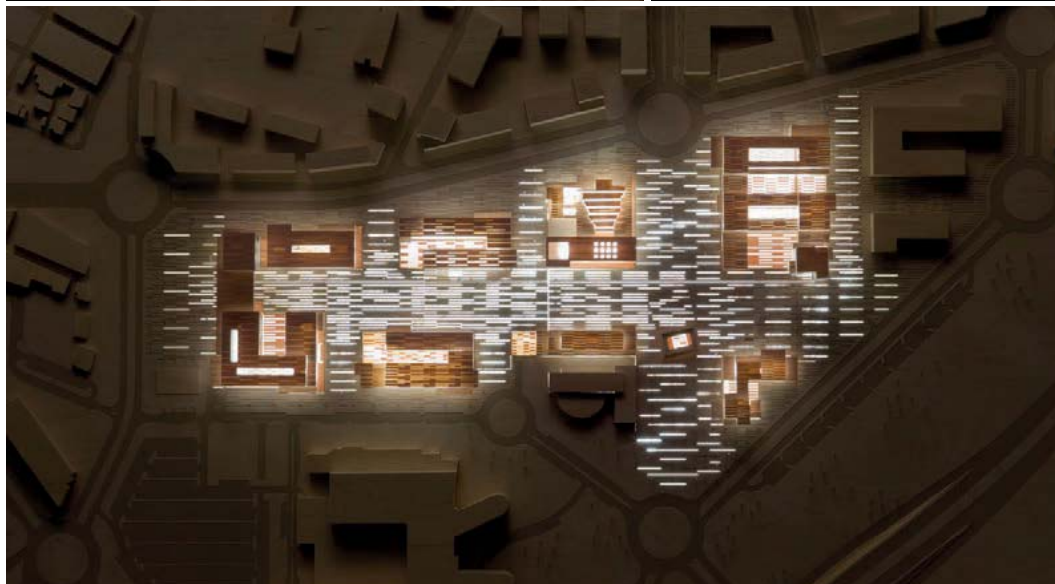
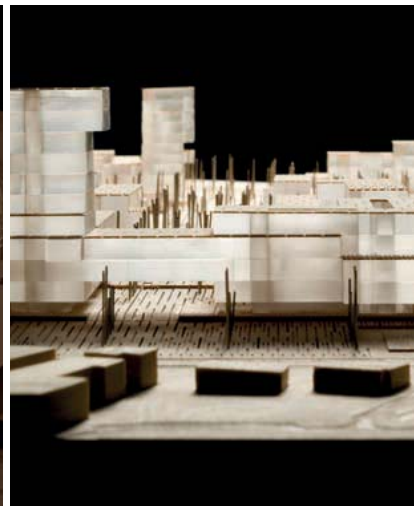
Project Description

In 2007 the University of Granada launched an architectural competition to design a their new Health Sciences Campus in Granada. The brief was to design the campus for four faculties and a general campus services building (containing a library, auditorium and dining hall). MEDIOMUNDO arquitectos was awarded third prize for their proposal. The prize was the commission to design the Health Sciences Faculty in Granada, one component of the project.

At MEDIOMUNDO arquitectos we saw the planning of the new Health Sciences Campus in Granada as an opportunity to create a new relationship between the city and local, territorial and metropolitan dynamics. We saw the location of the project as a way to secure the campus as a new focal point for health services and investigation in the region as well as new relationships within the metropolitan and local urban reality. We believed it fundamental to understand the intervention as a connection between both local and metropolitan behaviour and landscape.

Our proposal focuses on the structure of the public space inspired by territorial, rural and urban elements. At MEDIOMUNDO arquitectos we have developed the concept of the Matriz Vegetal, a tool for urban landscaping that adapts different types of vegetation and green environments to the scale required. This concept allowed us to design a series of public, collective and private spaces to sustain the different activities and relationships that take place within a campus of this nature. In our proposal the built areas are the result of a negotiation and interrelation with the green spaces surrounding them. We took into account the potential impact a project of this nature would have on the local economy and cultural uses of the land, as well as calculating the resulting energy consumption and attempting to ensure diversity in the area.

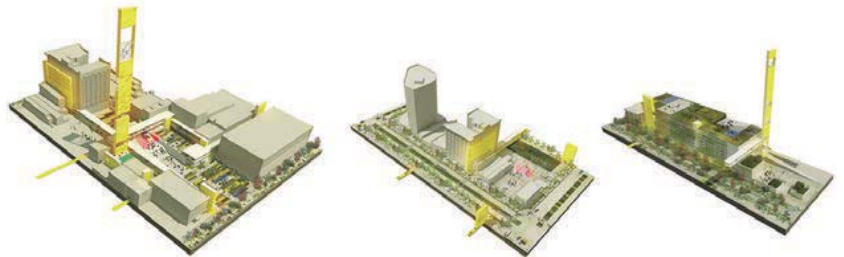
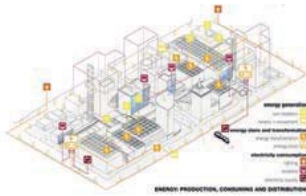
At MEDIOMUNDO arquitectos we recognize the need to incorporate the concept of the intelligent city into our work in order to generate new ways to construct urbanity and citizenship. In defining this concept we paraphrase the sociologist José Antonio Marina's definition of intelligence: "the creation of meeting points that stimulate, increase and integrate the values of the city and both individual and collective citizenship".



Salt Lake City Spaces in between

Technical data

ARCHITECT: Mediomundo Arquitectos
Marta Pelegrin & Fernando Perez
PROGRAMME: Urban Regeneration
SITE: Salt Lake City, USA
DATES, PHASES: COMPETITION: 2013
AREA: 96.863 m²
DEVELOPER: AIA Utah Young Architects
Forum and
the Downtown Alliance SixtyNine Seventy
Task Force en colaboración con Utah
Heritage Foundation
COLLABORATORS: José R. Guerra,
Bernardette Soust, Martina Maier, Martyn
Sutcliffe, Aleisa Santacruz, Jake Barrow, Jack
Wates, Alberto Babion, Jorge Tinoco, José
Martínez Fernández



Project Description

The new 69-70 district will CHANGE the "growth model" making our cities sustainable. Culture, connectivity, energy and information are the key aspects to turn into an other ATTITUDE. The idea refers to:

ENVIRONMENTAL EQUILIBRIUM: The proposal breaks the "consumption-cycle" by making each block self-sufficient and sustainable. Every block will balance its resource input and output in terms of O₂ and CO₂, energy production and water recycling.

The average urban household in Salt Lake City has a CO₂ emission of 22.96 metric tones pc annually(2010), with an energy consumption of 8.72KW/h pcd, H₂O consumption of 128g pcd. Each block is intended to break this resource consumption by achieving the highest level of sustainability and self-sufficiency.

CITY AS A PROCESS: The intervention strategy DEVELOPS IN TIME, uniting temporal and permanent actions consolidating the environmental objective. Proposing for the "spaces in between" and "meantime spaces" TEMPORARY USES, will create NEW ENVIRONMENTAL HABITS, that will support the EVOLVING CHANGE.

ACCESSIBILITY AND CONNECTIONS: "Culture has become technology and technology has become culture". We propose to develop, manage and work towards a city that is culturally, physically and technologically interconnected.

"INFORMATION IS CULTURE": As a means to improve the eco friendly culture of the city, the district will automatically capture data which is to be displayed to the city's landlords, government officials and its occupants simultaneously. This will enable them to see and monitor their direct impact on the environment, supporting the INTERNET OF CITIES.

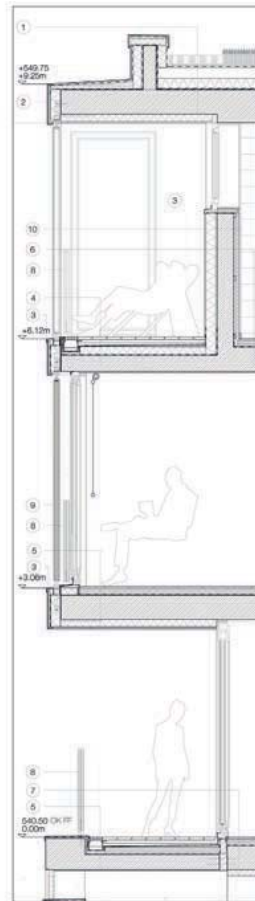
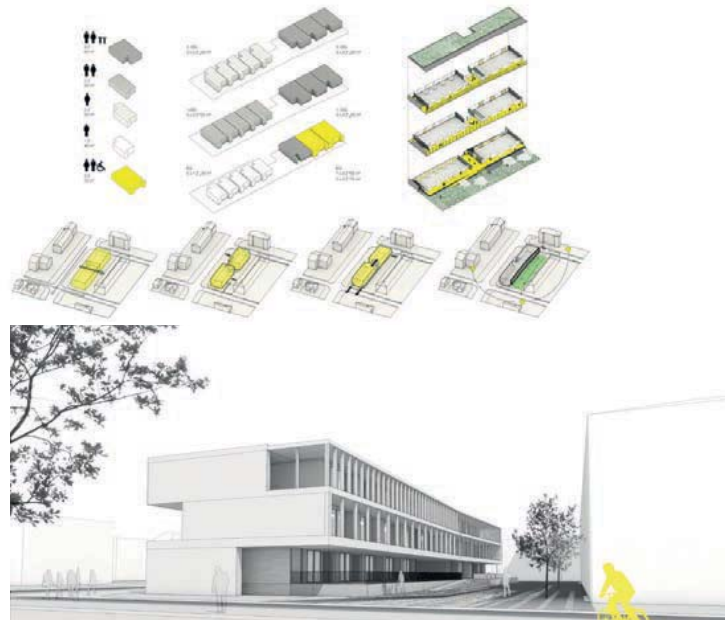


Graffelling. 24 Social Housing

24 apartments in two buildings, linked by means of an open air "arcades -portico", and underground car park. We've proposed solutions which are tailored to individual needs and innovative housing claims, in which different forms of life are combined. Attractive and affordable apartments in the sense of sustainable project, we propose through openness and flexibility, an adaptation of the living space to a variety of life forms. Special attention is paid on healthy living and working conditions (in accordance with DIN 5034-1: 2011-07 "daylight in indoor spaces". The connection to outside garden is always achieved, and an extra space is linked to the entrances to the apartments (oriented towards the southeast garden), through the arcades portico that creates quality accommodation for the inhabitants and a certain "degree of privacy" is generated.

Technical data

ARCHITECT: Mediomundo Arquitectos
Marta Pelegrin & Fernando Perez
PROGRAMME: Gebäude- und Freianlagenplanung für eine Wohnanlage u. Wohnbebauung Gräffelling
Rottenbucher Str. 24/26
SITE: 82166 Gräffelling
DATES, PHASES: COMPETITION: 2015
AREA: 1560m² Housing 600m² Underground Carpark
DEVELOPER: Gemeinde Gräffelling
COLLABORATORS: Claudia Cerrelli

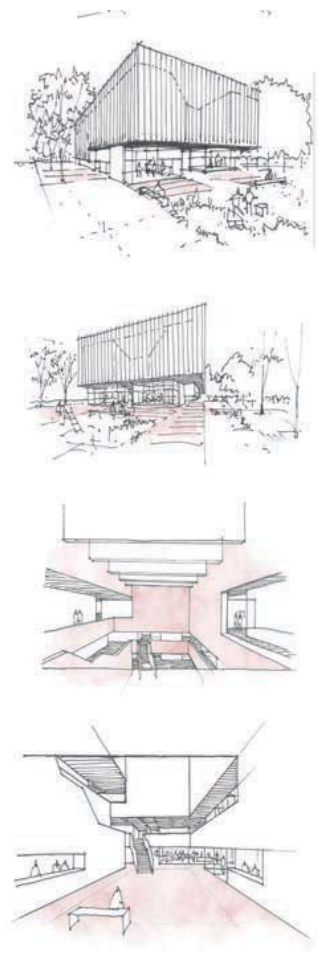
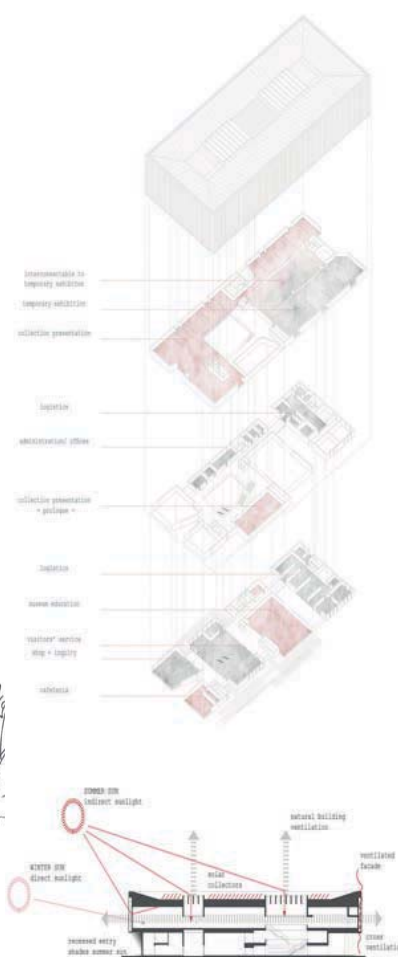


Bauhaus Museum Dessau

For national and international visitors, tourists, researchers and designers, the new museum will provide the requirements for an adequate presentation of the collection, for which a sufficiently sized space with appropriate high technical standards, as well as a high standard of safety. The new building for the Bauhaus Museum Dessau will highlight the vitality of the heritage and the importance of the Bauhaus. The Museum seeks to evoke an intense and continuing dialogue on the importance of Dessau as a fiery nucleus of a network of modernism. In terms of content and organisation, it is closely related to the historic Bauhaus building and associated with the Bauhaus buildings spread across the city. It is only in Dessau you can experience how the work of teachers and students inspired a whole city and the industry: MEDIOMUNDO applies the Traceability of their construction elements and process to outstand this connections and principles.

Technical data

ARCHITECT: Mediomundo Arquitectos
Marta Pelegrin & Fernando Perez
PROGRAMME: Construction of a museum with outdoor- and parking spaces
SITE: Dessau
DATES, PHASES: COMPETITION: 2015
AREA: 6.460 m² Building + 1200 m² landscape Design.
DEVELOPER: Stiftung Bauhaus Dessau
COLLABORATORS: Claudia Cerrelli.



New housing in Chorweiler Nord

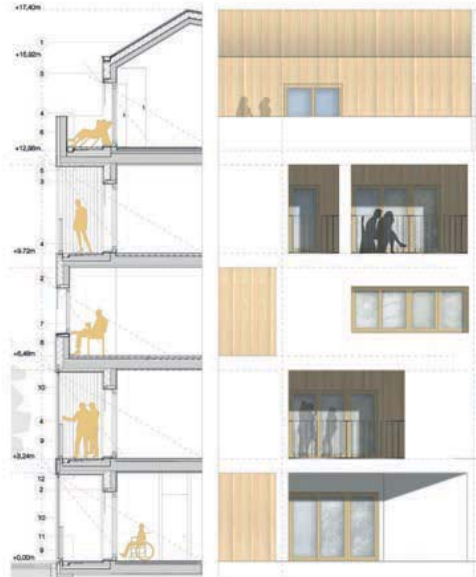
The goal of our project is to design a neighborhood rich in identity that harmoniously integrated into its surroundings and creating an urban-urban transition between the densely populated large-scale settlement east of the competition area and the western green belt.

The buildings take up the references of the surrounding road trains, from these outlines, a volume development results in the interior of the property. The position of the buildings creates a variety of architectural and scenic situations. The proposal shapes defined spaces without suffering the desired permeability - visually or real -.

The individual buildings are characterized by their simple structure in organization and construction. The modularity ensures flexibility and a possible adaptation of the housing key to changing requirements. The architecture provides for a rhythmization of the facade through the various openings - balconies and windows. The recesses offer an interesting picture, which breaks the large scale of the building volumes into individual elements. Visually, the materials of the white exterior plaster and of the wood cladding dominate, which give each unit an individual picture, but in the whole create a uniform statement about the cohesion of the different buildings.

Technical data

ARCHITECT: Mediomundo Arquitectos
Marta Pelegrin & Fernando Perez
PROGRAMME: 250 housing and Urban Development
SITE: Chorweiler, Germany
DATES, PHASES: COMPETITION: 2015
AREA: 18 HA
DEVELOPER: GAG Immobilien AG
COLLABORATORS: Claudia Cerrelli, Maria García Otero, Valme Del Rio López, Ellen Mekiffer



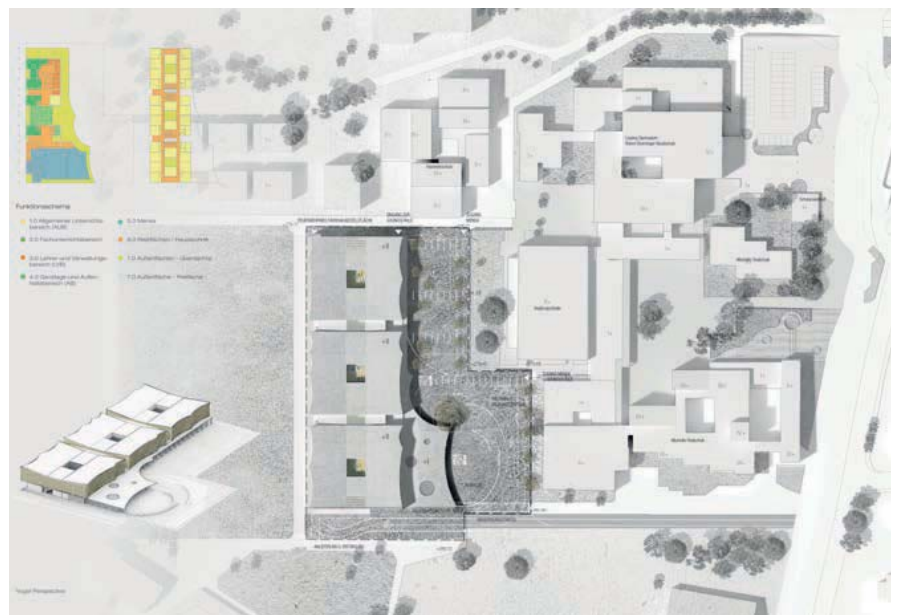
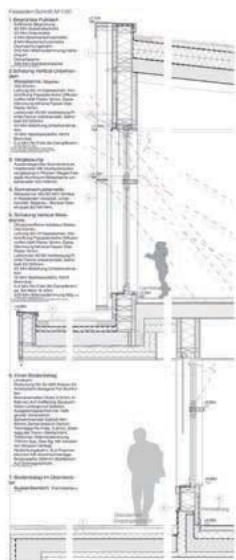
Primary School of Winnenden

The new Primary School of Winnenden has to be designed considering a new teaching model based on the concept of a "Learn House" where different spaces can coexist (learning, playing, working, resting...). Each Learn house hosts two class of the same level, and will be merged with another Learn House forming a "Cluster". Our project accepts a double challenge: on one hand wants to solve the relation between the new building and the existing complex respecting the surrounding and creating an enclosure for the new complex, on the other hand wants to achieve the program and the requirements.

The building lays longitudinally in the western part of the plot, offering a facade to the football camp and releasing a big square in the Eastern part, just in front of the existing complex. It is organized in two levels to emancipate and organize the clusters, identified as independent volumes laying on the same basement. The internal organization of each cluster revolves around a central courtyard. This arrangement allows a great versatility and interchangeability of uses between the different rooms while the patio itself acts as a common space and meeting area, allowing outdoor activities and managing a climatic damper thanks to the various display possibilities.

Technical data

ARCHITECT: Mediomundo Arquitectos
Marta Pelegrin & Fernando Perez
PROGRAMME: Albertville-Realschule Winnenden (Robert Boehringer)
SITE: Winnenden
DATES, PHASES: COMPETITION: 2015
AREA: 4200 m2 Building + 1200 m2 Landscape Design.
DEVELOPER: town of Winnenden & Albertville-Realschule Winnenden (Robert Boehringer)
COLLABORATORS: Claudia Cerrelli.



Residential complex for elderly people

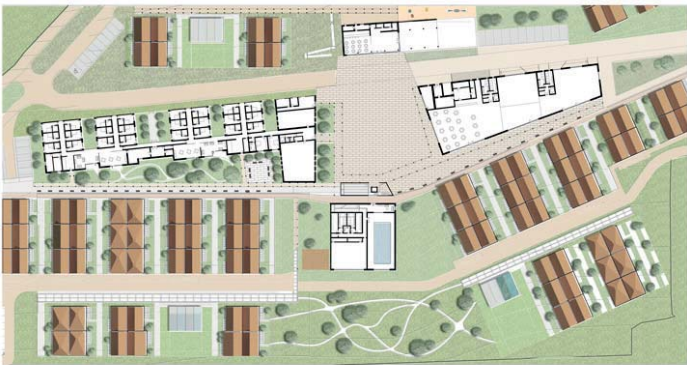
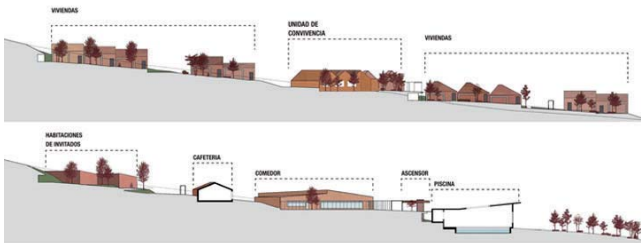
Based on the concept of 'identity within diversity', the proposal is organized as a set of buildings and open spaces that allow for the best optimization of the topography and landscape, as well as the control of building scale, in order to deliver a sense of proximity and identity to the residents.

The group of buildings for communal use is set in the central part of the plot, to achieve, as much as possible, an equal travel distance to/from the living units. Organized around a central square, which acts as an agora - the main meeting point, all communal buildings are connected through a series of covered walkways. The living units are distributed in 4 distinct districts, composed

of groups of 4-6 houses, alternated with open spaces. We propose a modular pattern with shared services which can be adapted internally for various configurations, depending on the needs of the residents. All units have direct access externally, through individual porches and gardens. Two approaches to the houses' roof enclosures allow for an overall unity, without losing individuality. In order to achieve full accessibility for all units, each group of houses is set within similar terrain slope and the connection to the communal areas is achieved through flat covered walkways or a system of fully accessible ramps. The organization and distribution of the buildings avoids large

built areas, generating a scale that matches the small neighboring town. The diversity of green and open spaces, such as planted gardens, allotments, outdoor activity areas or informal green spaces encourages a variety of activities, sedentary or active. The proposal embodies both an architecture and infrastructure which can incorporate various circumstances of the inhabitants.

Technical data
ARCHITECT: Mediomundo Arquitectos
Marta Pelegrin & Fernando Perez
PROGRAMME: 180 houses + common services
SITE: Meruelo, Cantabria, Spain
DATES: 2016
PHASES: COMPETITION: 2016
AREA: 6,8 HA
DEVELOPER: Ciudad Residencial Brisa del Cantábrico Sociedad Cooperativa
COLLABORATORS: Claudia Cerrelli, Simona Cojocaru



Design re-use patron Kindergarten

Moscow, Russia

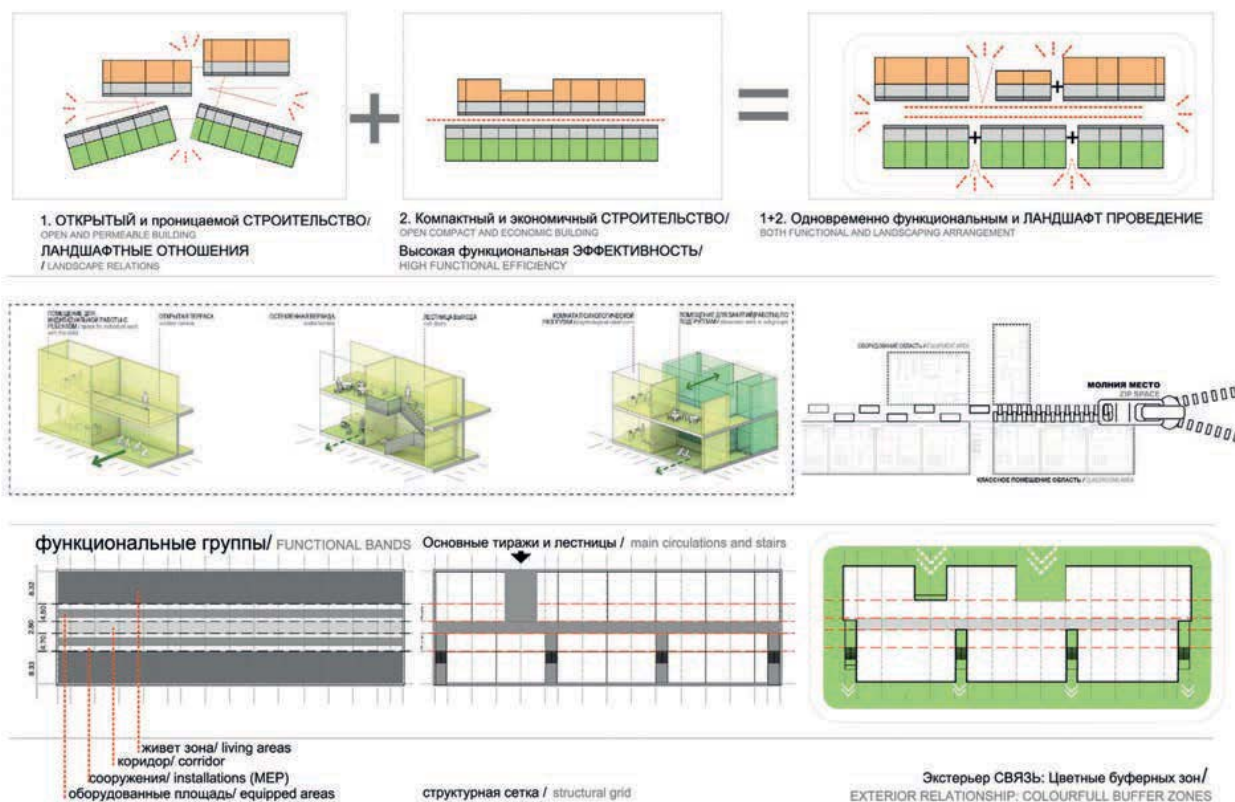
The buildings K1 and K2 are part of the urban development plan run by EDDEA-ATLANTICA group for the Leninsky district, Moscow. This master plan defines the concept of "Design Re-use Patron" as a key tool for the intervention in the plot.

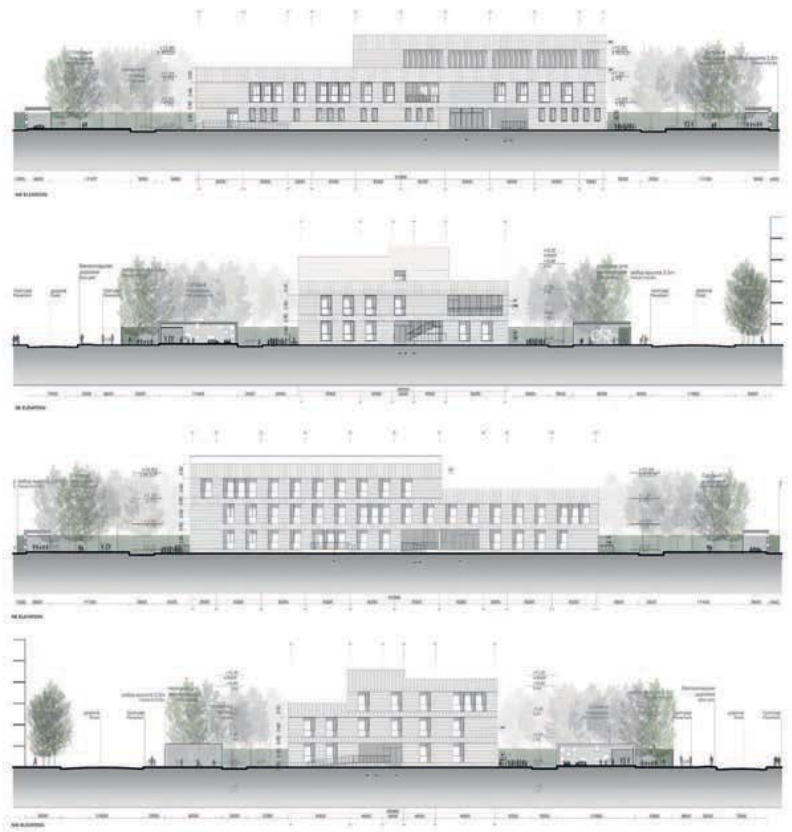
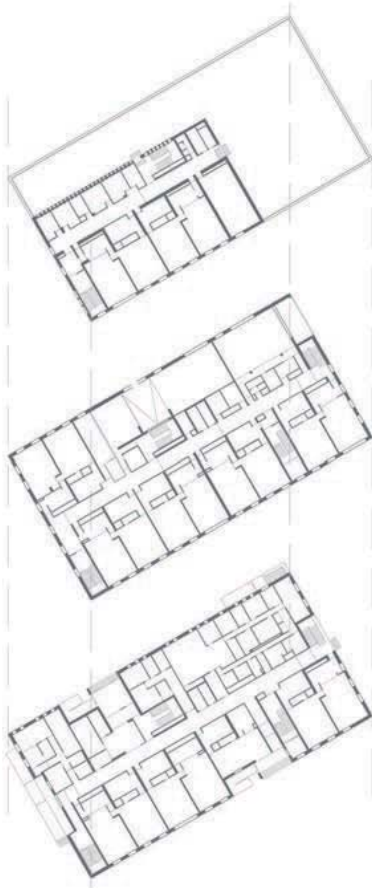
In this context MEDIOMUNDO Arquitectos developed the kindergartens and their surroundings. For this project we propose a patron composed by a system of elements, rules and principles which fit the norms, restrictions and program requirements.

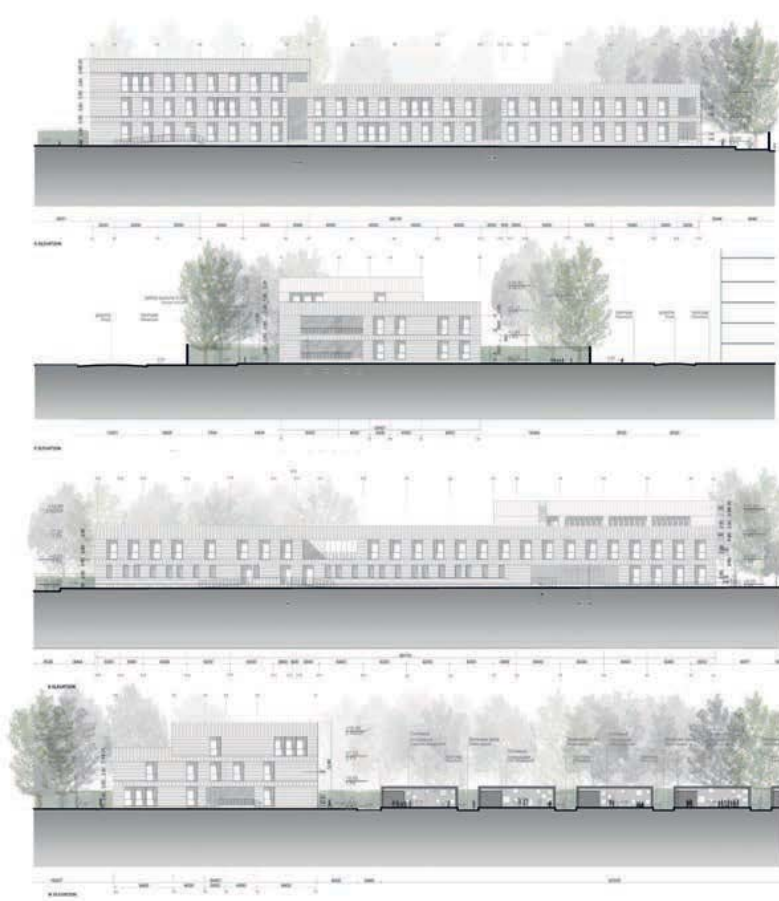
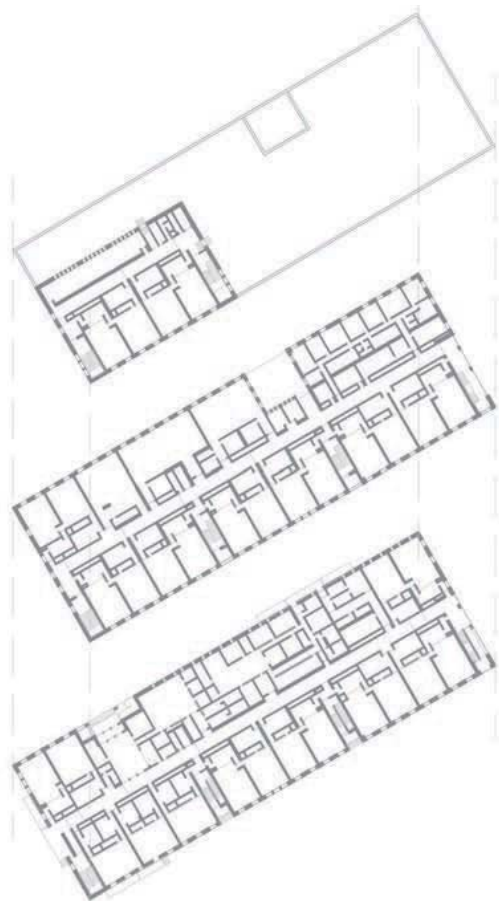
The resulting buildings have been defined to improve the architectural quality of the interior spaces and the general quality of life. To achieve this we accepted the challenge to study thoroughly the existing typologies to improve the spaces and, at the same time, to adapt the program requirements to the designed building, making them modular, extensible, reusable.

The developed proposals have been created with BIM technology, which permits to obtain and manage building information, materials and finishing definition, constructive systems definition, material and element quantifying.

ARCHITECTS: MEDIOMUNDO ARQUITECTOS + EDDEA
ARQUITECTURA Y URBANISMO S.L.P.
PROJECT KINDERGARTEN SYSTEM
PROGRAMME kindergarten (K1-K2) for 220 + 350 children
SITE Leninsky District - Moscú
DATE OF PROJECT 2013
PHASES 2013 - 2014 PRELIMINARY PROJECT
CATEGORY EDUCATIONAL EQUIPMENT
AREA K1= 4173 M² K2= 6.096 M²
CLIENT PRIVATE
ADVISORS Arch. Vadim Ya Lenok - Ing. Clancy
COLLABORATORS Arch. Claudia Cerrelli, Arch. José Ramón Guerra, Arch. Bernardette Soust, Christina Georgiou, Alvaro Lopez, Noel Venegas







Design of Residential Tower Rayon Aeroport

Moscow, Russia

Preliminary design for 8 residential tower and commercial spaces in Moscow.

ARCHITECTS:	MEDIOMUNDO ARQUITECTOS + EDDEA
PROJECT	ARQUITECTURA Y URBANISMO S.L.P.
PROGRAMME	RESIDENTIAL TOWERS
SITE	8 towers of 20 floors
DATE OF PROJECT	Rayon Aeroport - Moscow
PHASES	2014
CATEGORY	2014 PRELIMINARY PROJECT
AREA	RESIDENTIAL - COMMERCIAL
CLIENT	80.000 M ²
COLLABORATORS	PRIVATE
	Arch. Claudia Cerrelli, Arch. José Ramón Guerra, Arch. Bernardette Soust





SAVVINO

PRELIMINARY CONCEPT MASTERPLAN

Moscow, Russia

Preliminary concept masterplan for residential building and social equipments in the "Savvino" region, Moscow.

ARCHITECTS:	MEDIOMUNDO ARQUITECTOS + EDDEA
PROJECT	ARQUITECTURA Y URBANISMO S.L.P.
PROGRAMME	MASTERPLAN
SITE	Residential buildings - social equipments
DATE OF PROJECT	Savvino - Moscow
PHASES	2014
CATEGORY	2014 Masterplan
AREA	URBAN DESIGN
CLIENT	450.000 M ²
COLLABORATORS	PRIVATE
	Arch. Claudia Cerrelli, Arch. José Ramón Guerra, Arch. Bernardette Soust



