

MTE I
Teórico color – 6c

M1

1	2	3	4	5	6	7	8
---	---	---	---	---	---	---	---

representación de objetos creados por el estudiante

movimientos geométricos en el espacio - maqueta

TEÓRICO Nº 6c **COLOR**
SDO

LÁPIZ COLOR
ejemplos

medios y técnicas de expresión I

El objetivo principal es procurar la visualización y la comprensión de un objeto tridimensional mediante su representación en el **SDO**

Teórico 6a

[A] **FORMACIÓN DE COLORES**

MEZCLA ADITIVA

MEZCLA SUSTRATIVA

MEZCLA PARTITIVA

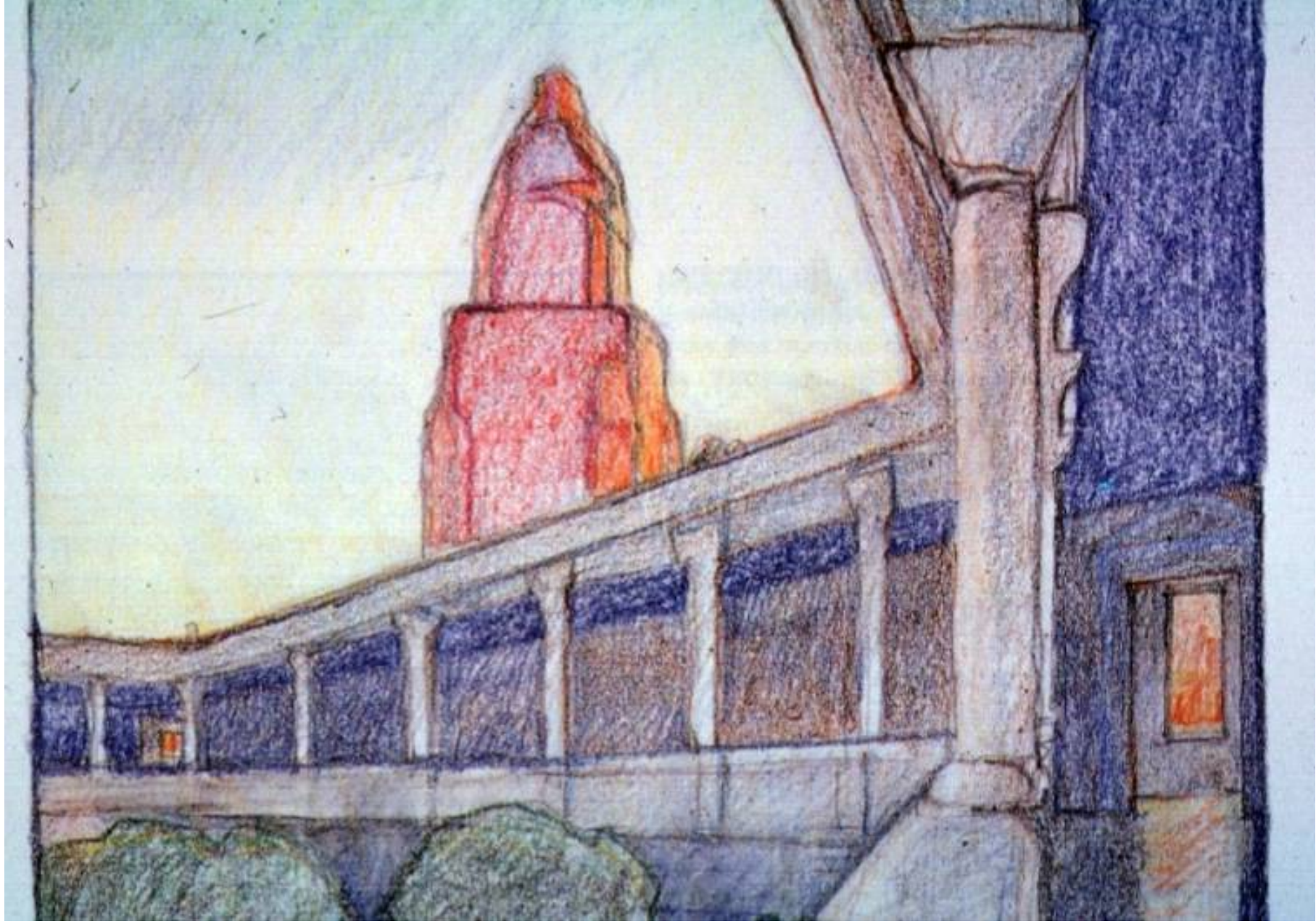
[B] **EXPRESIÓN DEL ALEJAMIENTO**

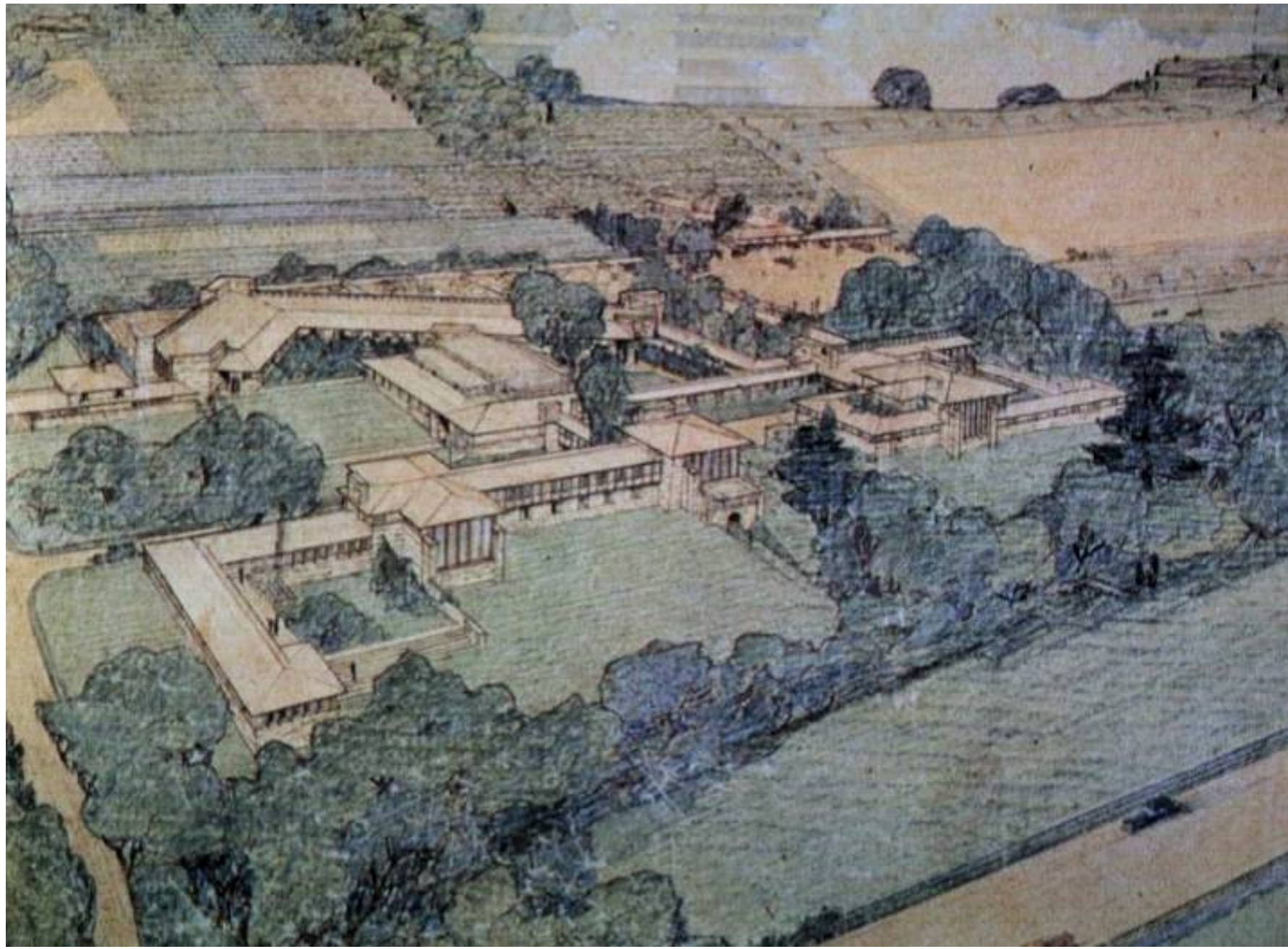
SATURACIÓN Y BRILLO DEL COLOR

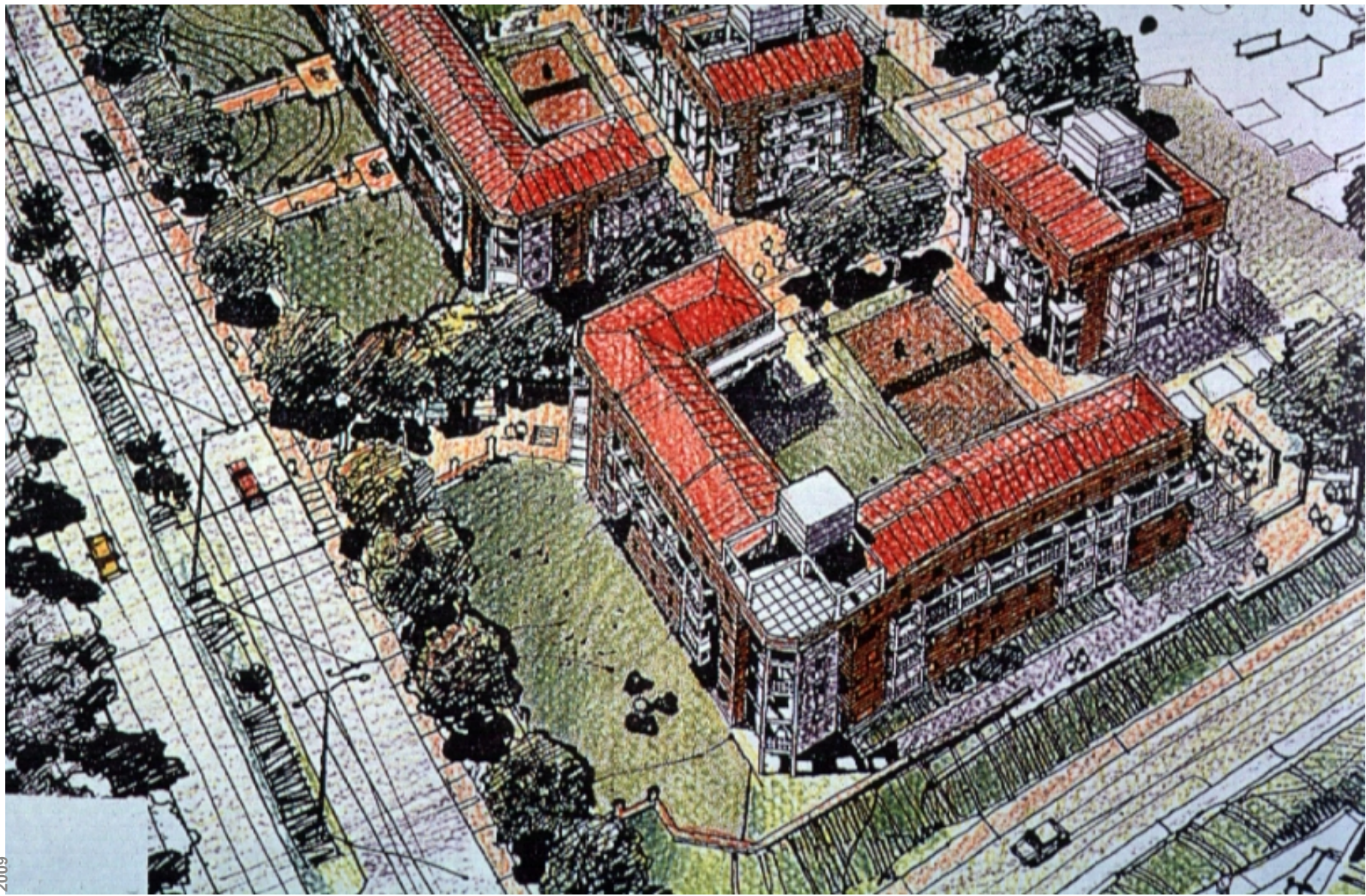
Teórico 6b

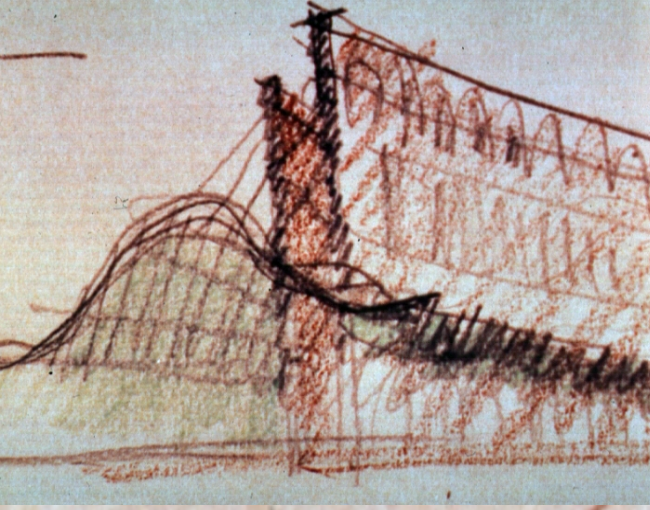
[C] **TÉCNICA DEL LÁPIZ COLOR** EJEMPLOS

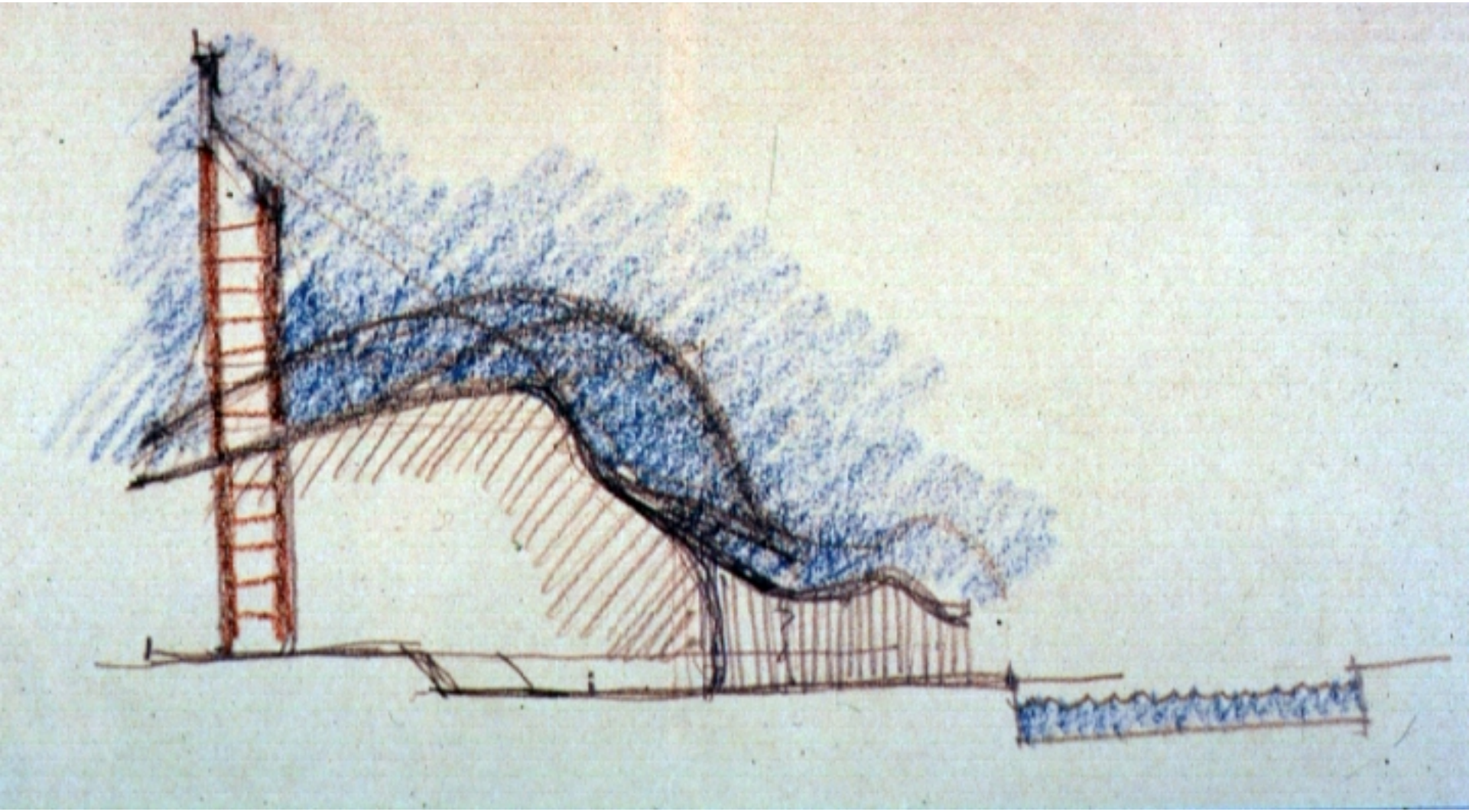


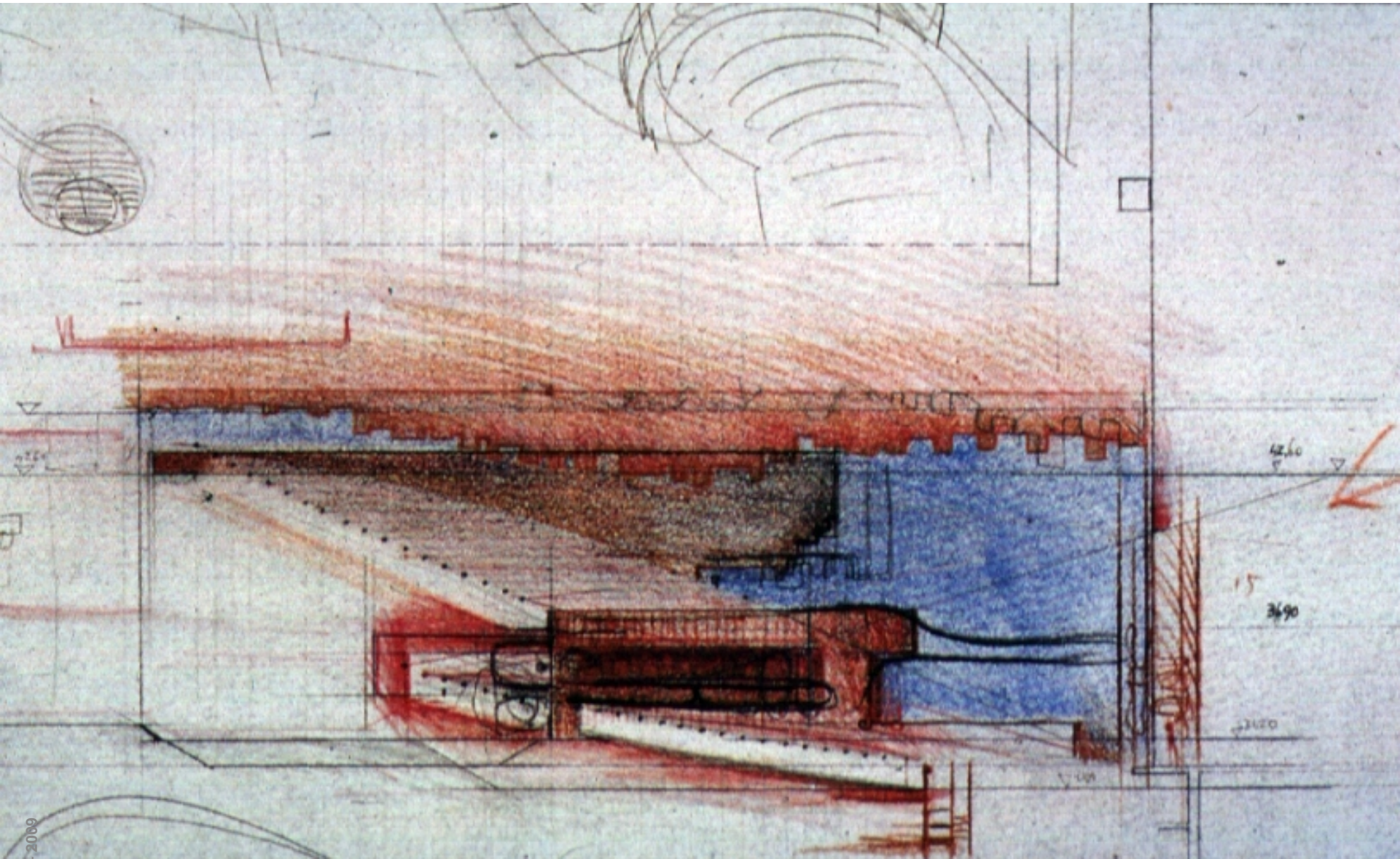




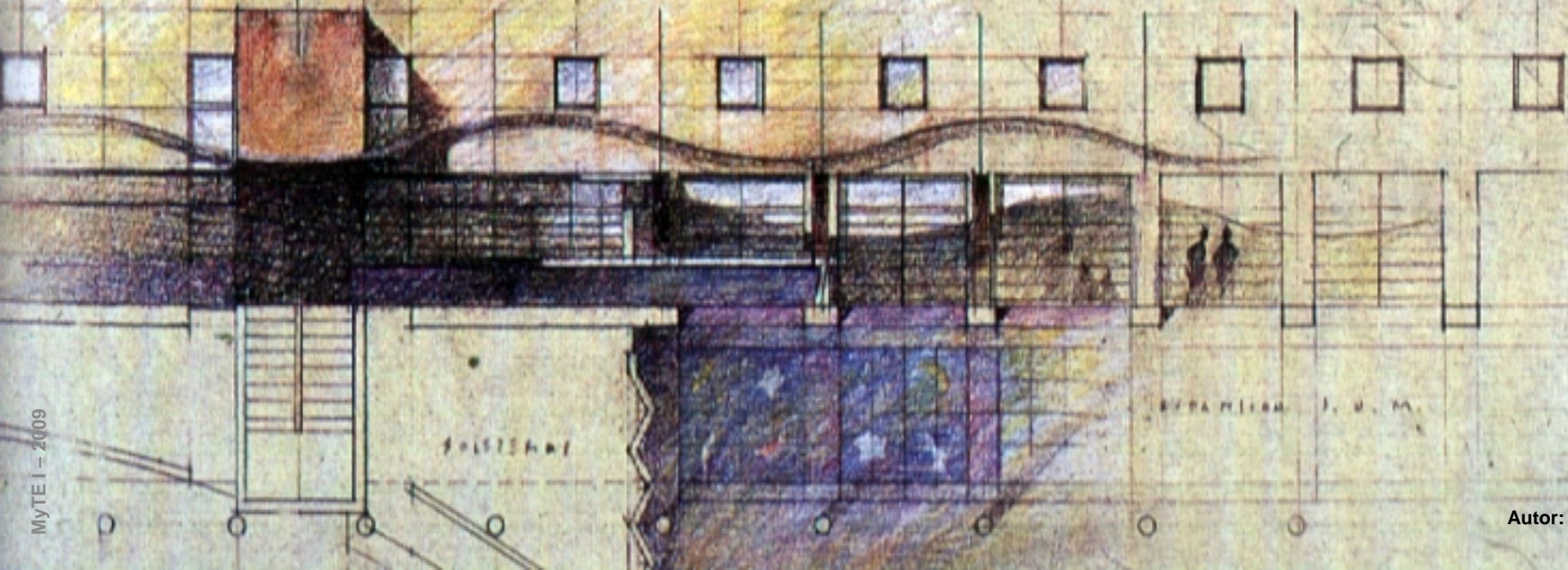






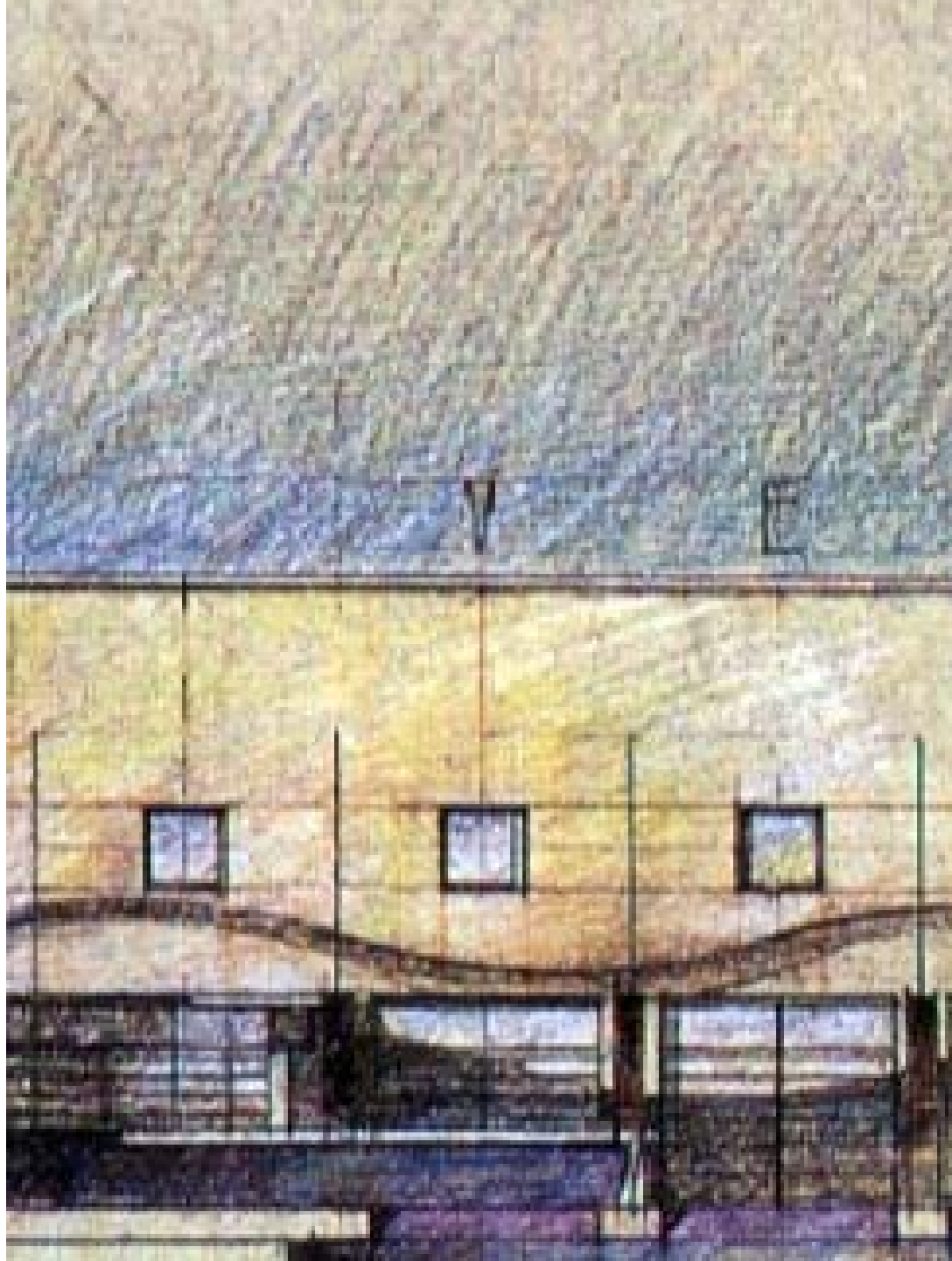


D E V E R A N O



PLANTA

BY DA MIERA J. U. M.

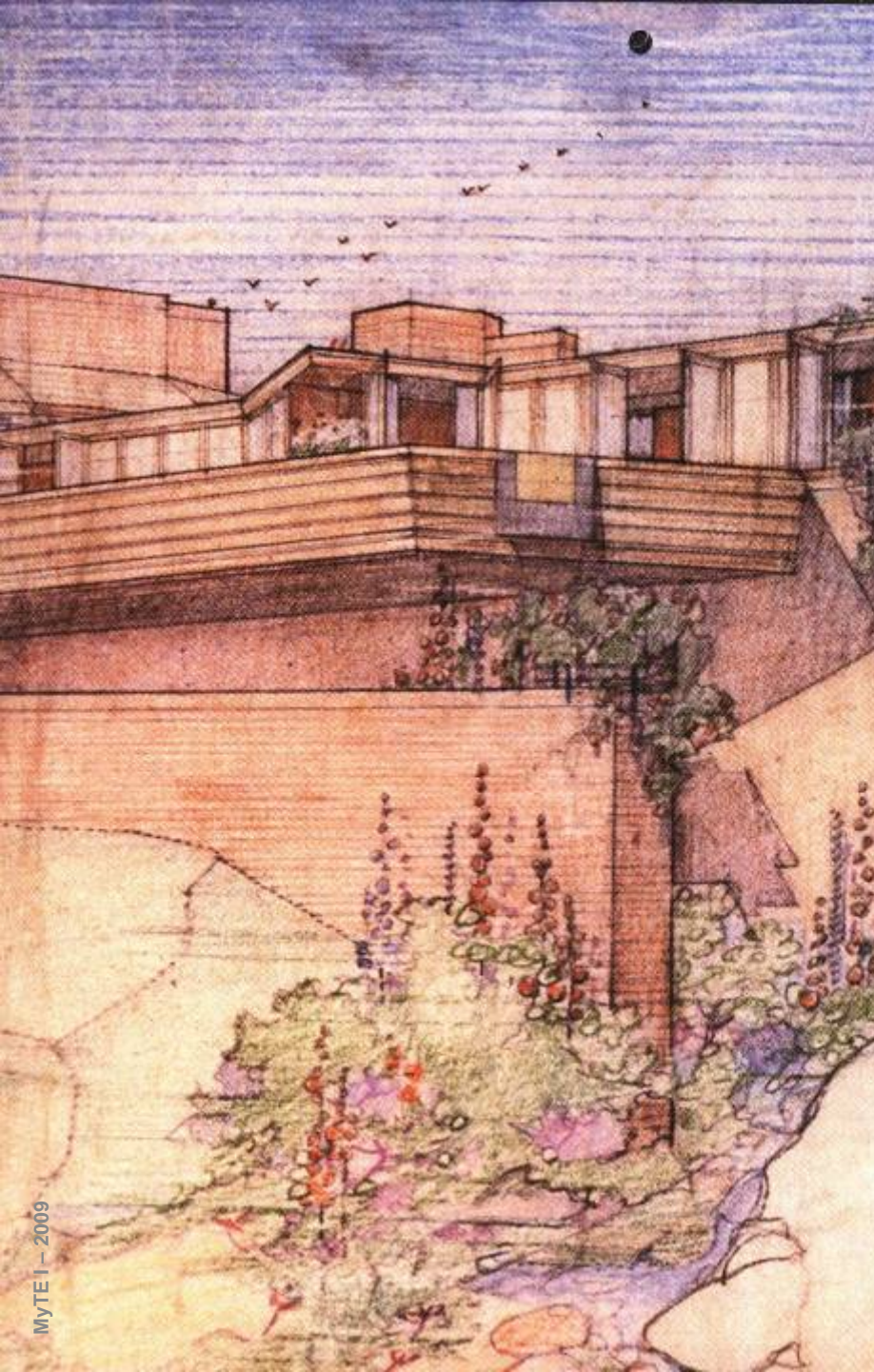


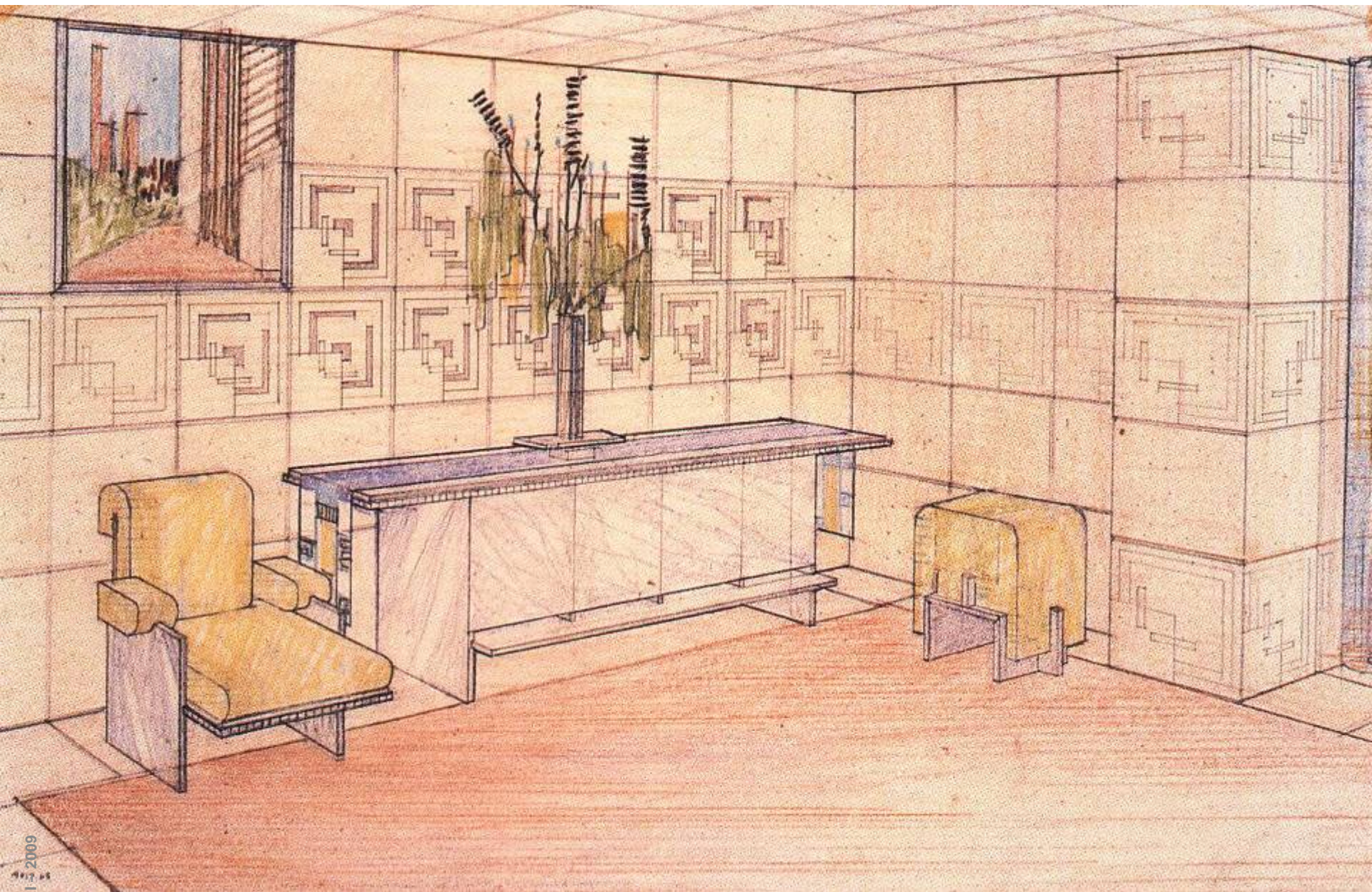


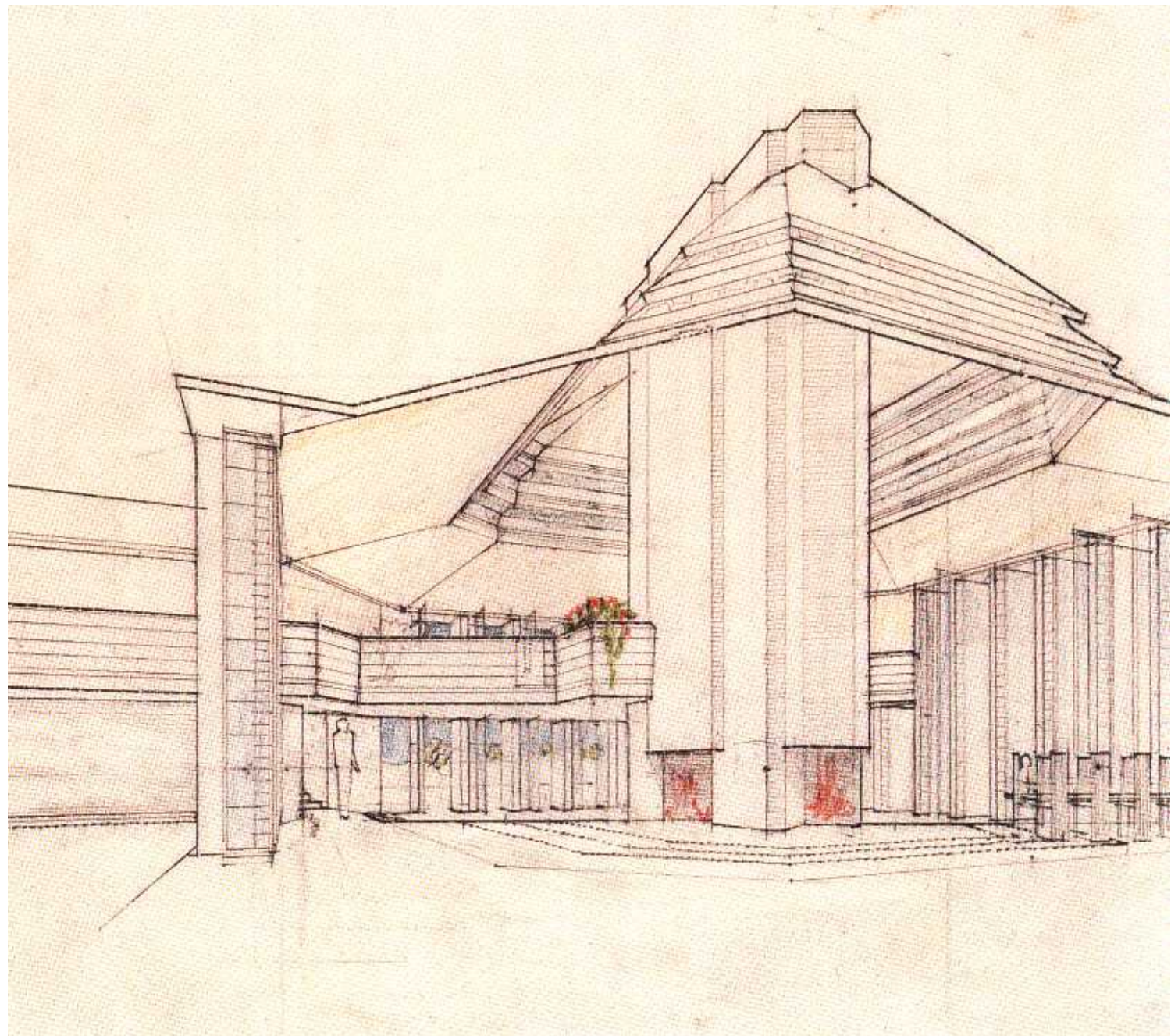
MYTE I - 2009

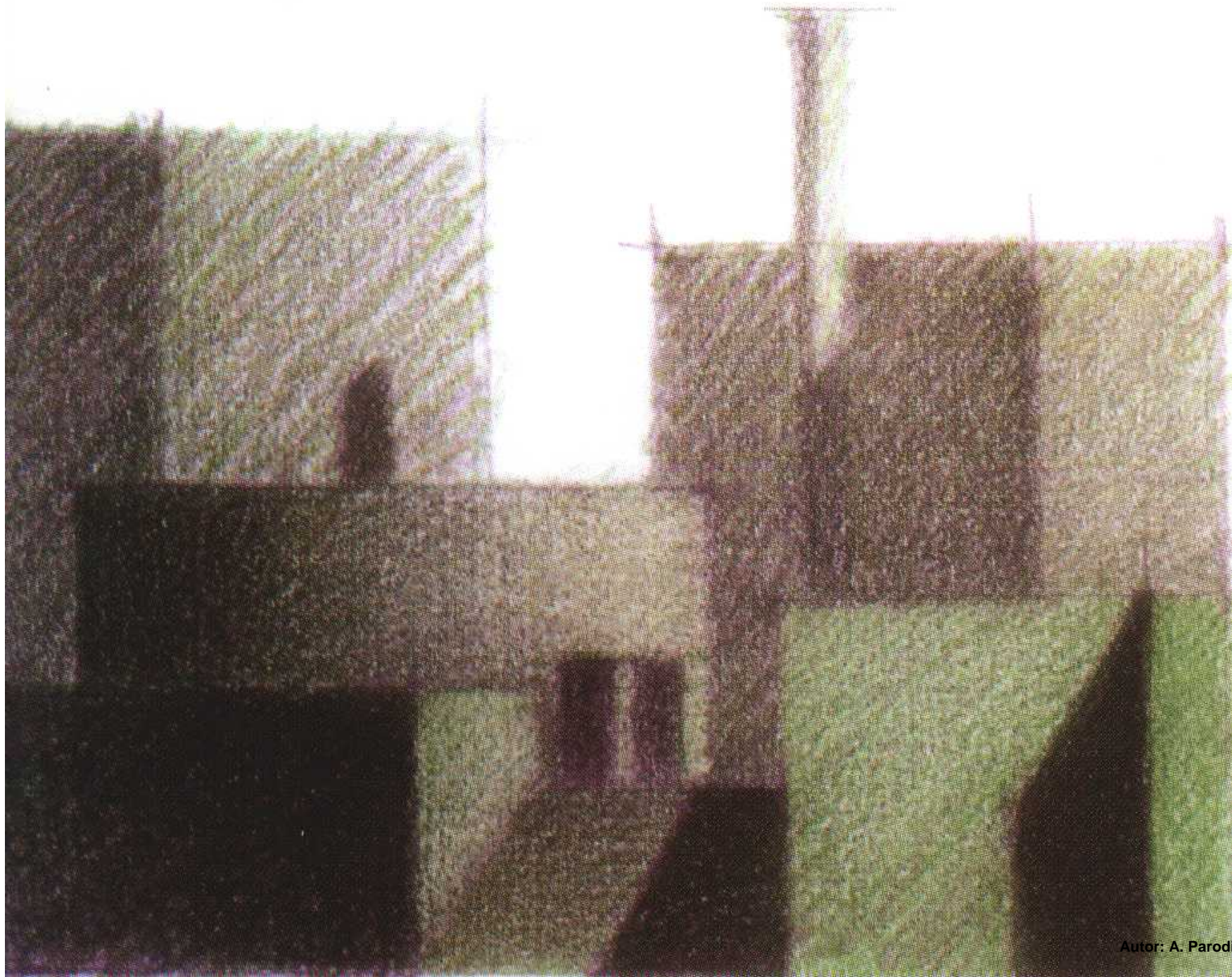


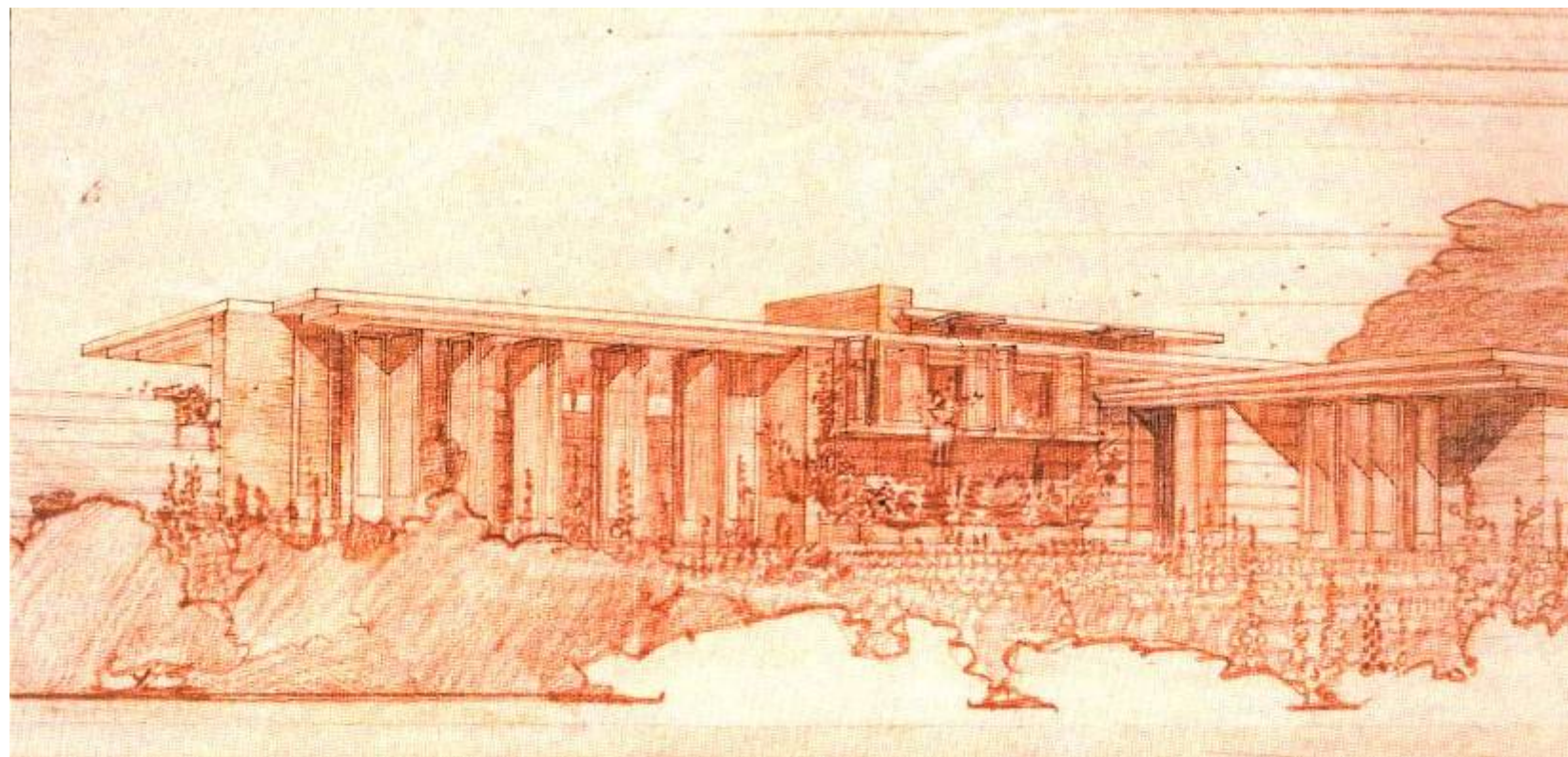
Autor: F. LL. Wright

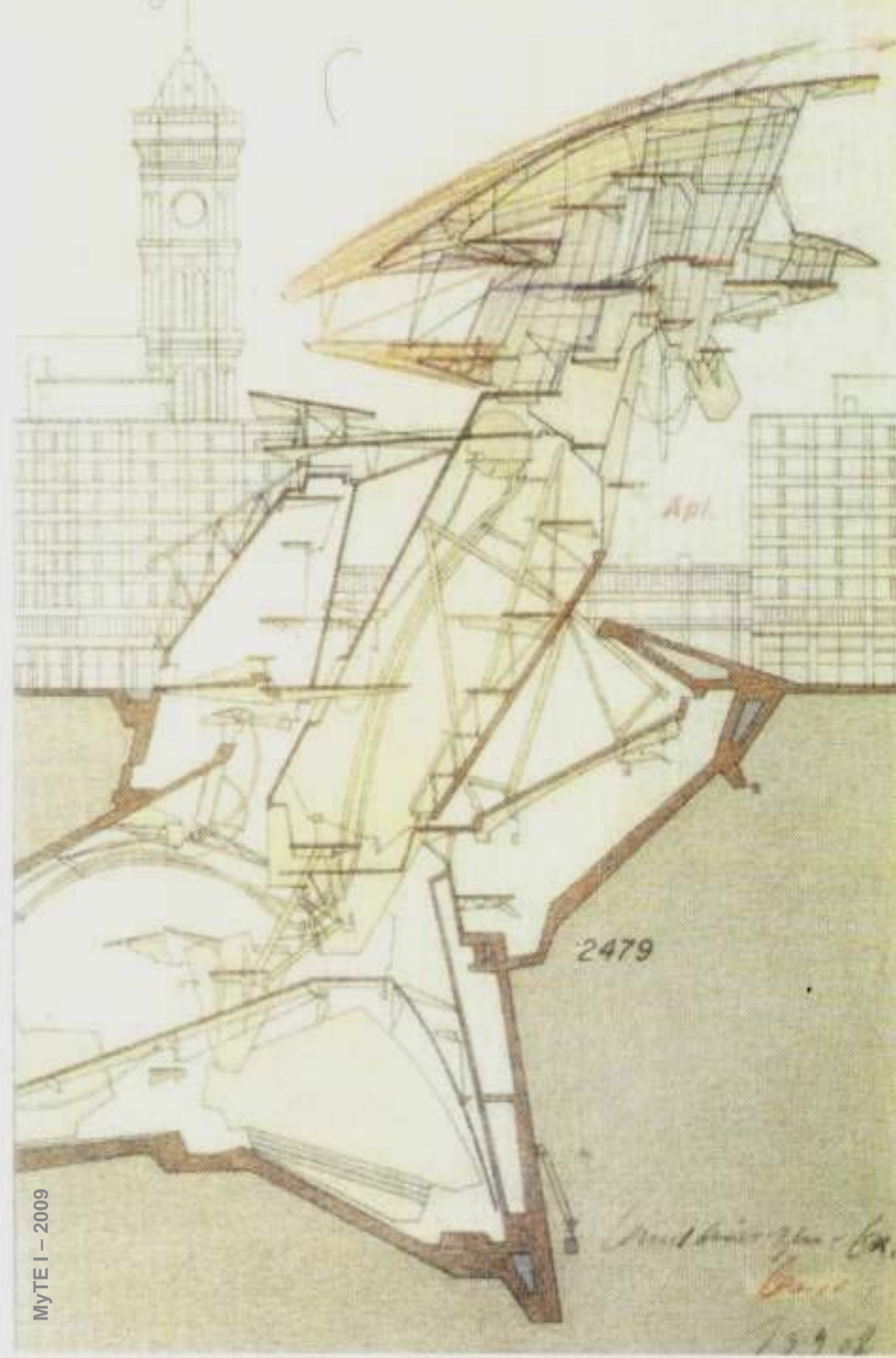














MYTE 1 - 2009

Autor: F. LL. Wright





MTE I
TEÓRICO 6C
FIN