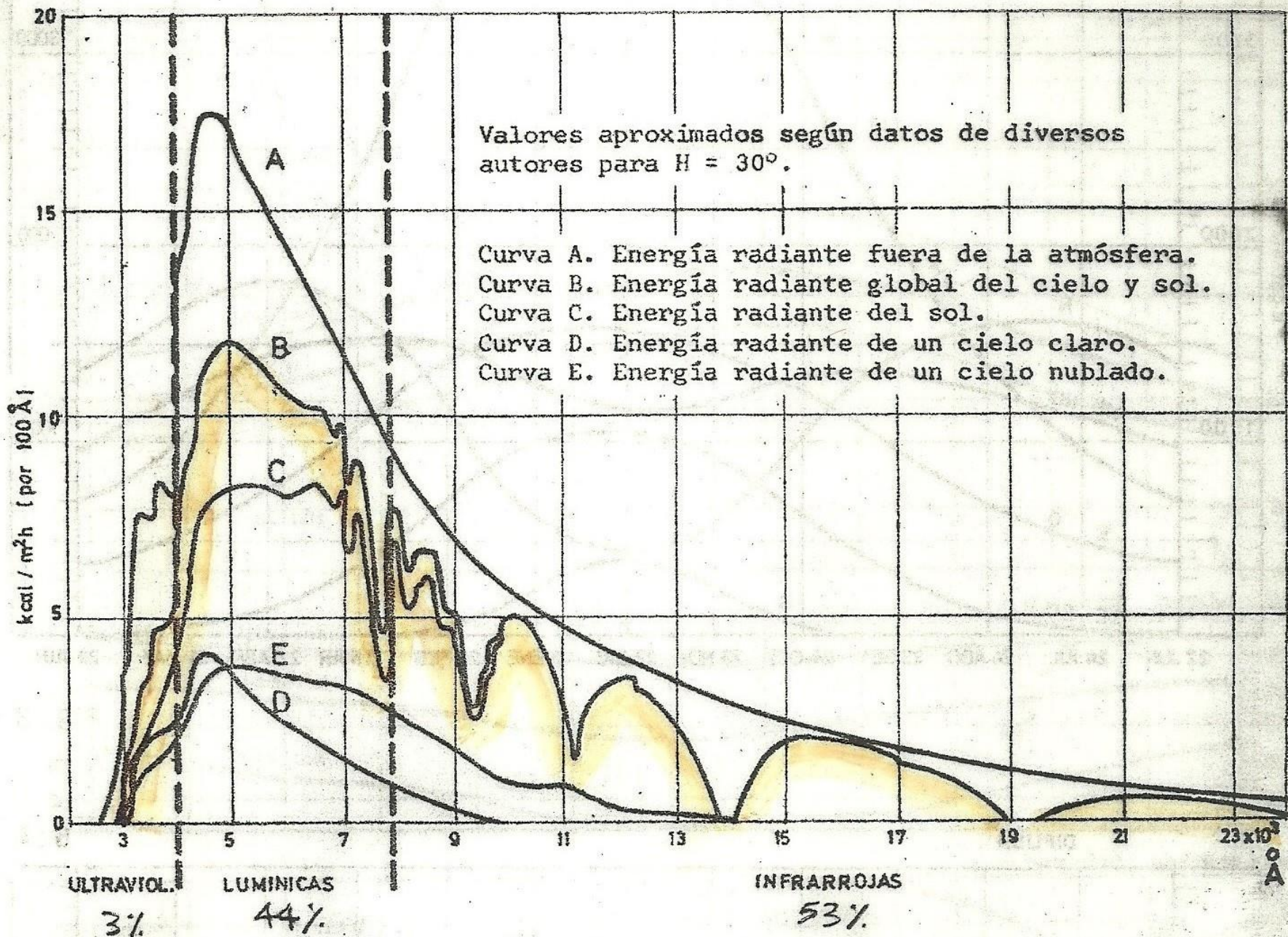


VARIABLES DEL CLIMA

DISTRIBUCION ESPECTRAL DE LA ENERGIA RADIANTE DEL SOL



TRAYECTORIA SOLAR

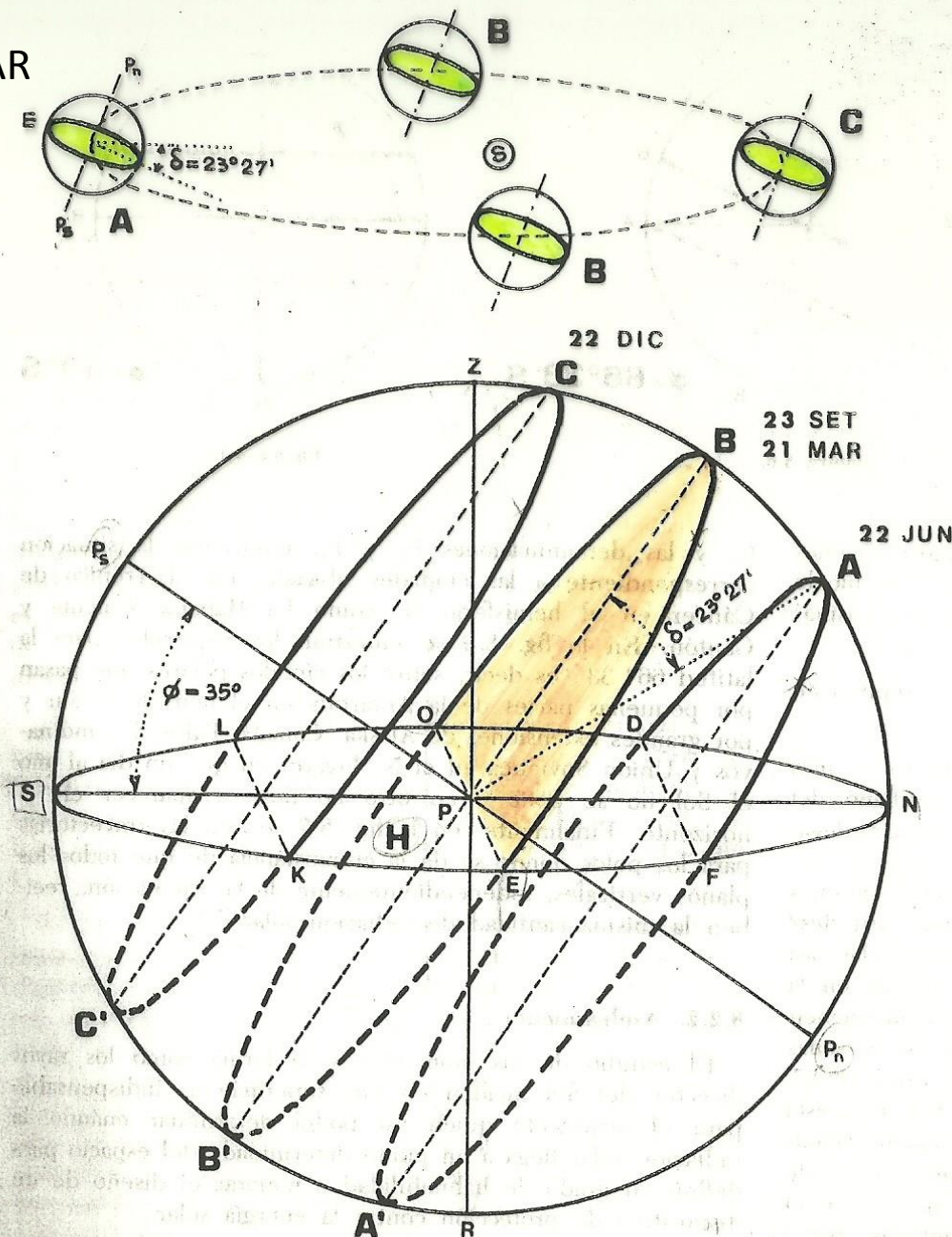
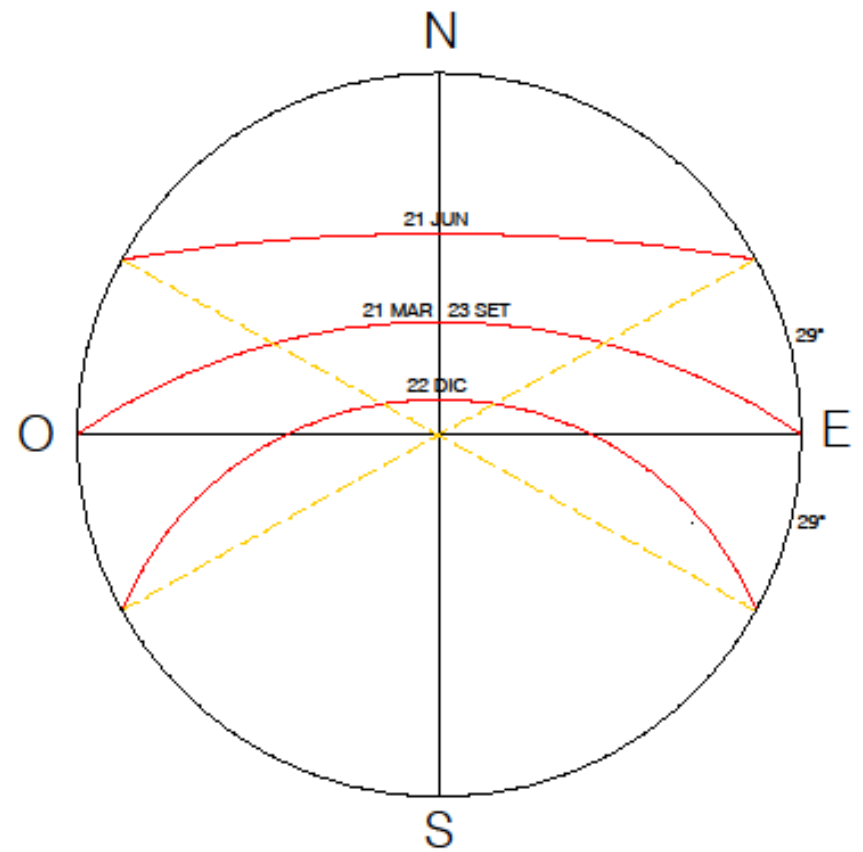
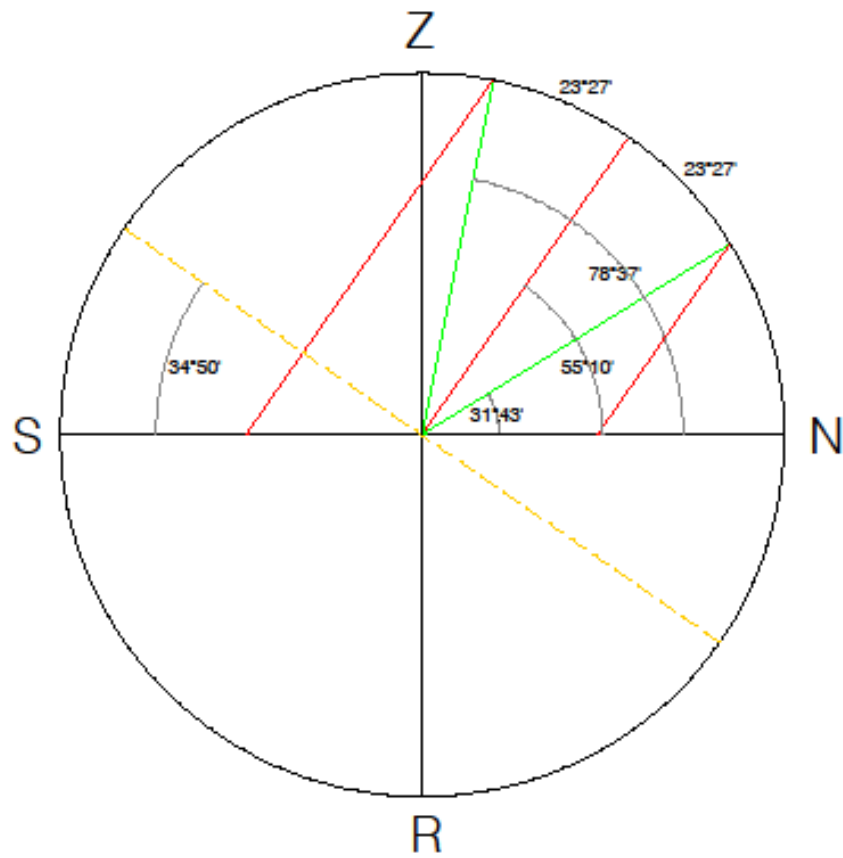


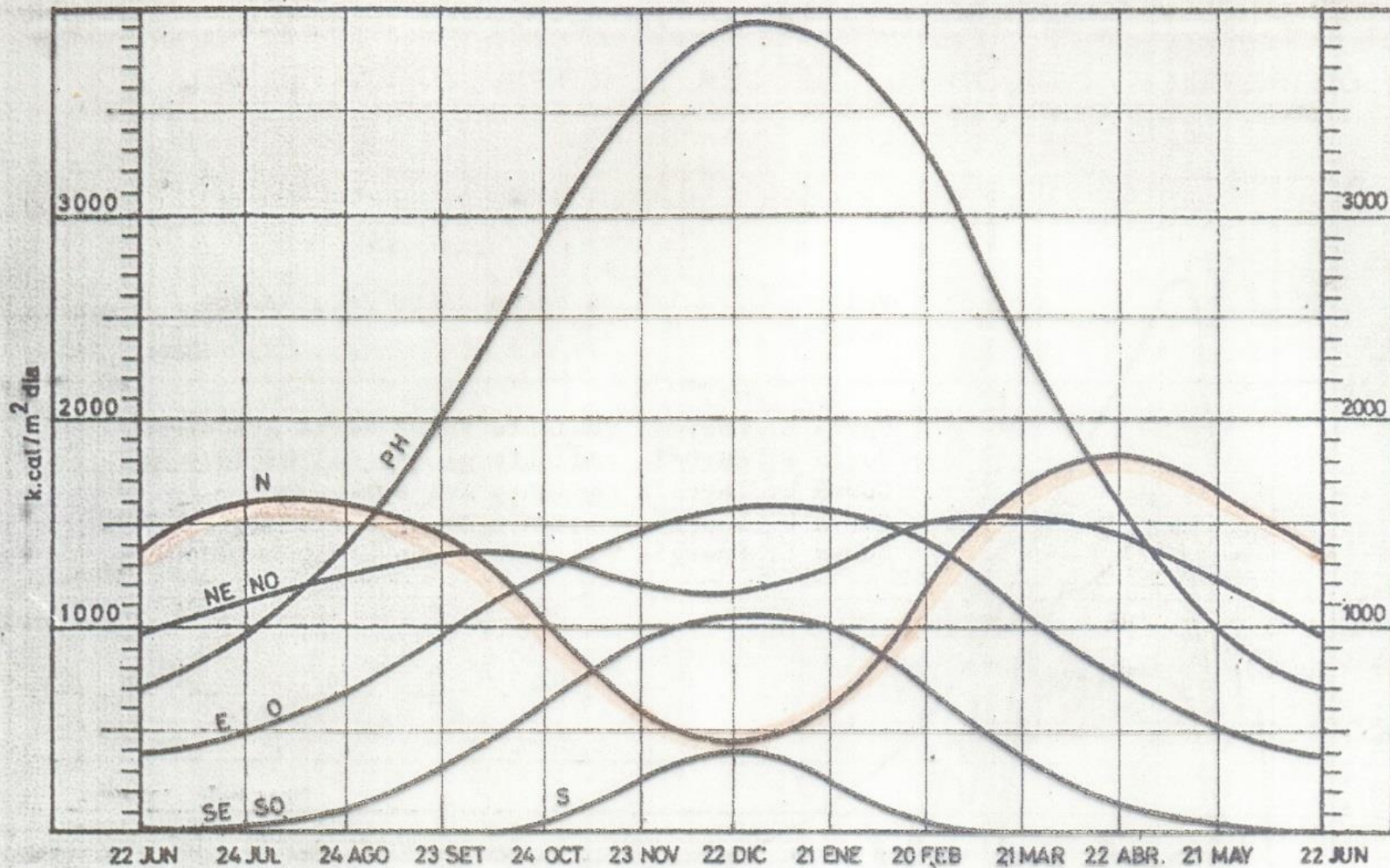
Figura 8.2. Representación gráfica de los movimientos relativos del Sol para un observador situado en P, en la latitud 35° S (Montevideo).

ESTEREOGRÁFICAS

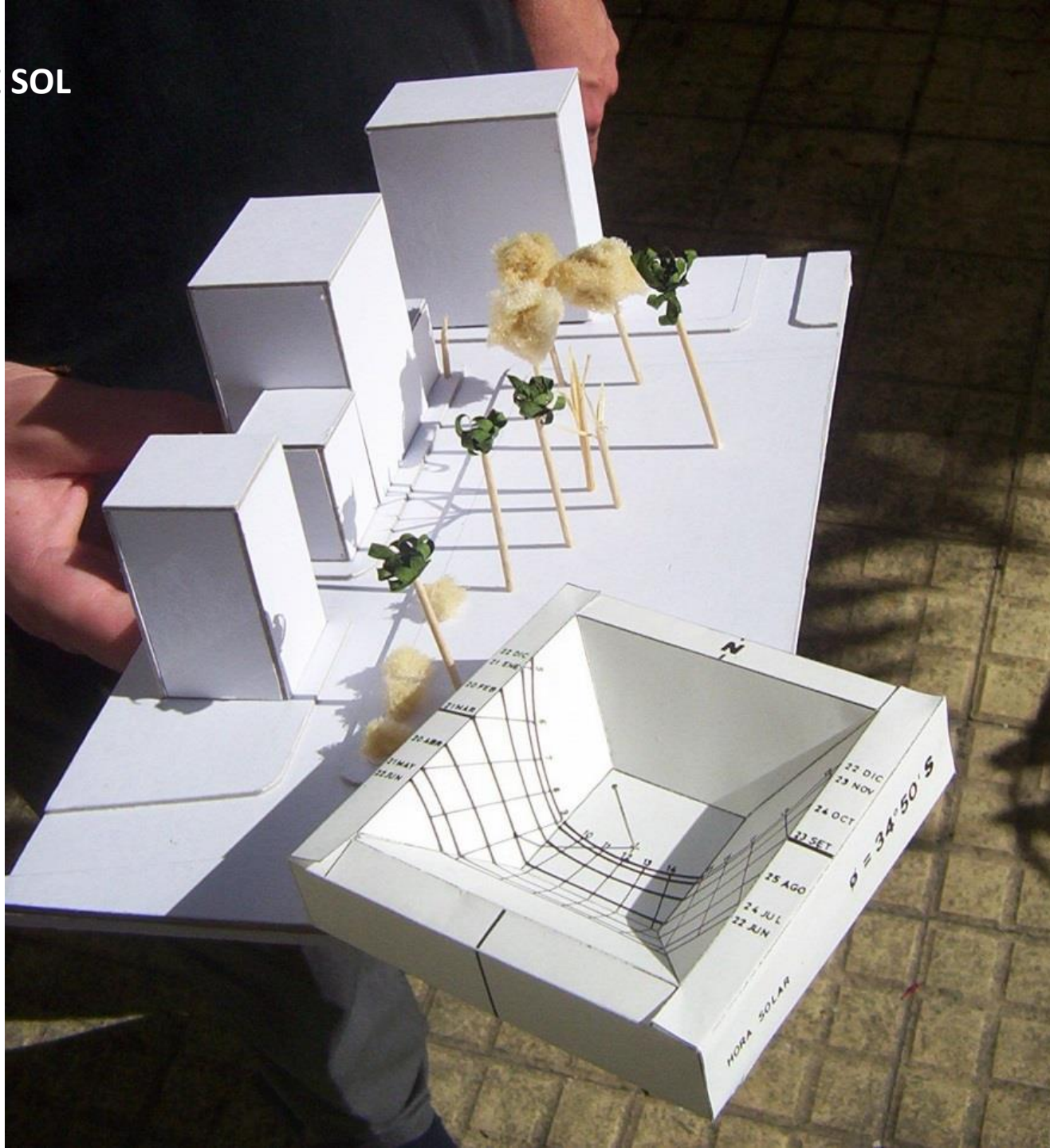


RADIACIÓN DIRECTA

DIRECTA



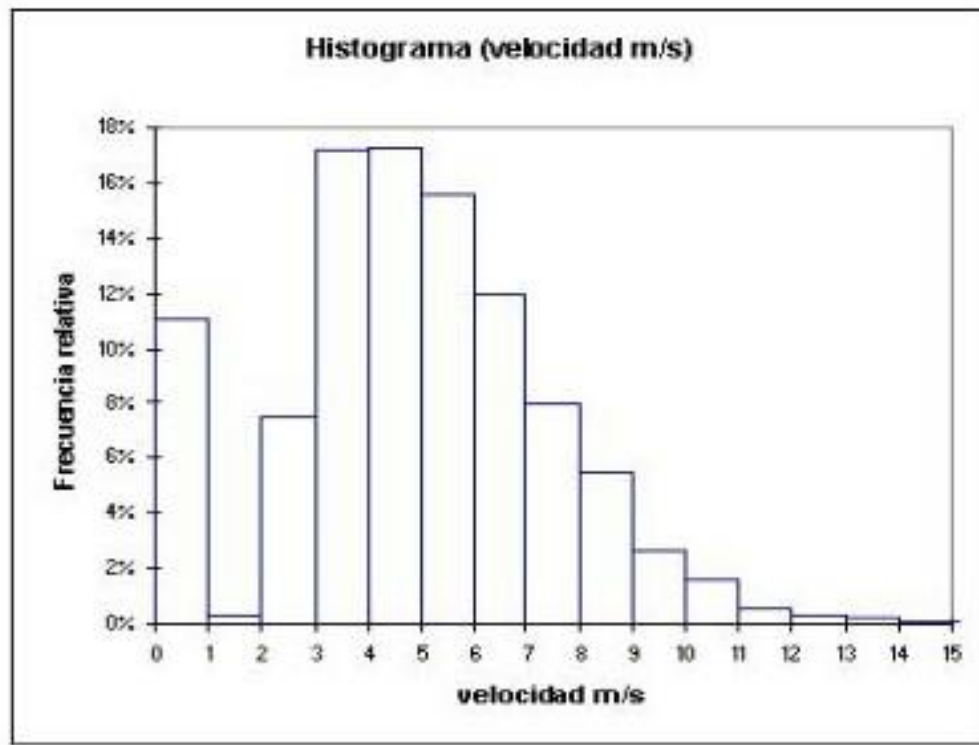
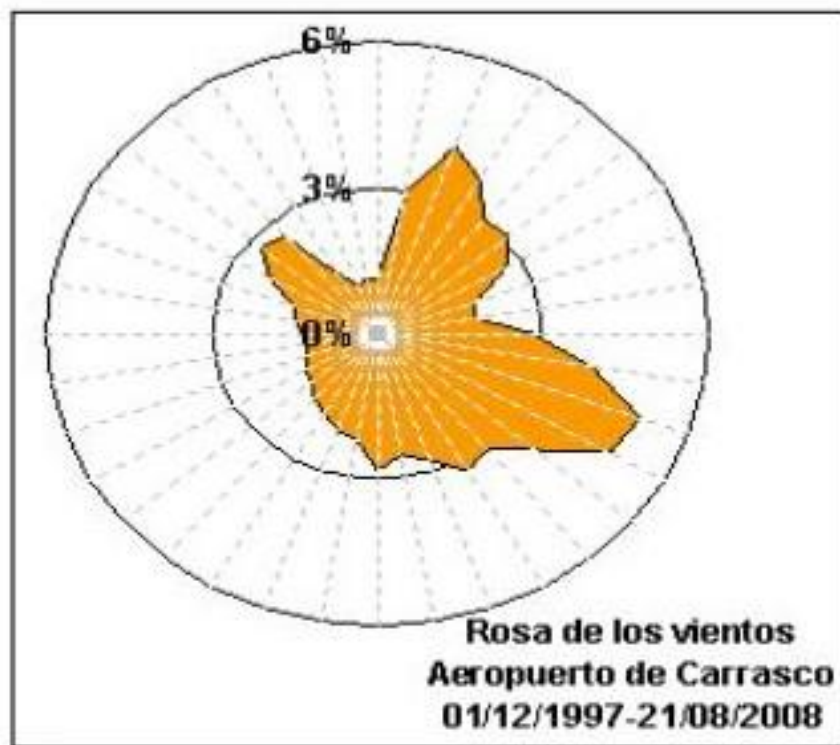
RELOJ DE SOL



RELOJ DE SOL



ROSA DE LOS VIENTOS



REPRESENTACIÓN DEL VIENTO



ANTÁRTIDA



SYDNEY

